

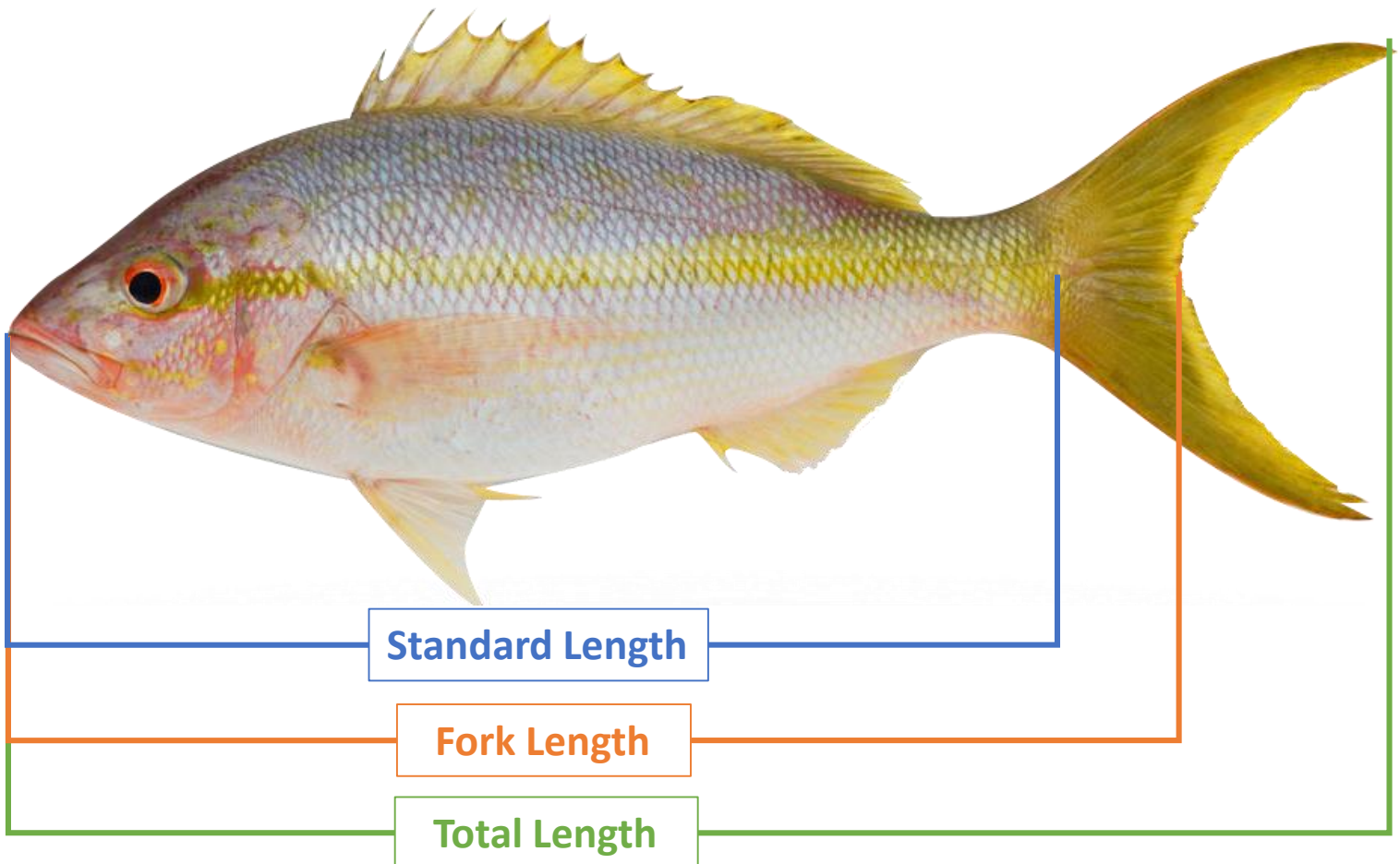


Fish Measuring Activity



How to Measure a Fish

- Total Length (**TL**): From the tip of the snout to the tip of the tail
- Fork Length (**FL**): From the tip of the snout to the fork of the tail
(If tail is straight and not forked, skip this measurement)
- Standard Length (**SL**): From the tip of the snout to the end of the fleshy part of the tail (the caudal peduncle)



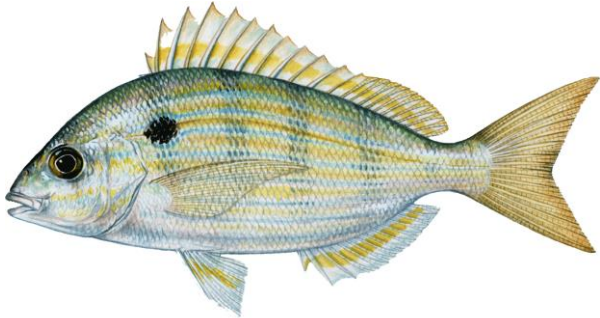
Fish Measuring Activity

Directions: Cut out the ruler on the bottom of this page and hold it against the pictured fish to take length measurements.

Note: Make sure to put the snout all the way against the 0mm mark.

Remember: In science, it is most common to record lengths in millimeters (abbreviated “mm”)!

Pinfish

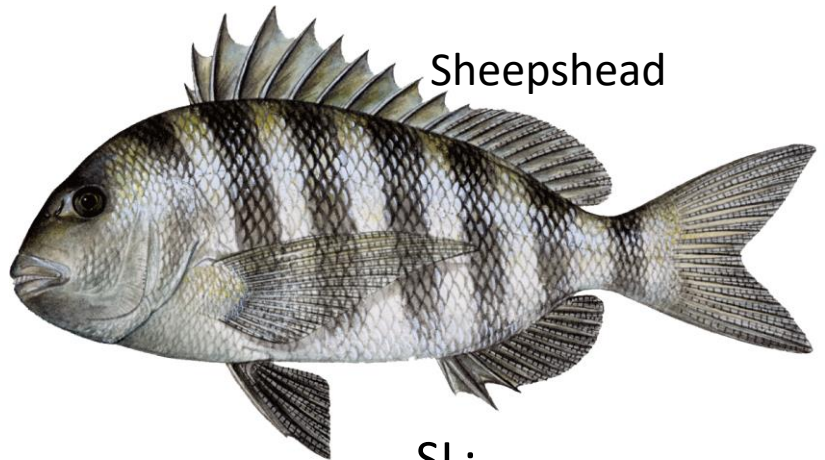


SL: _____

FL: _____

TL: _____

Sheepshead

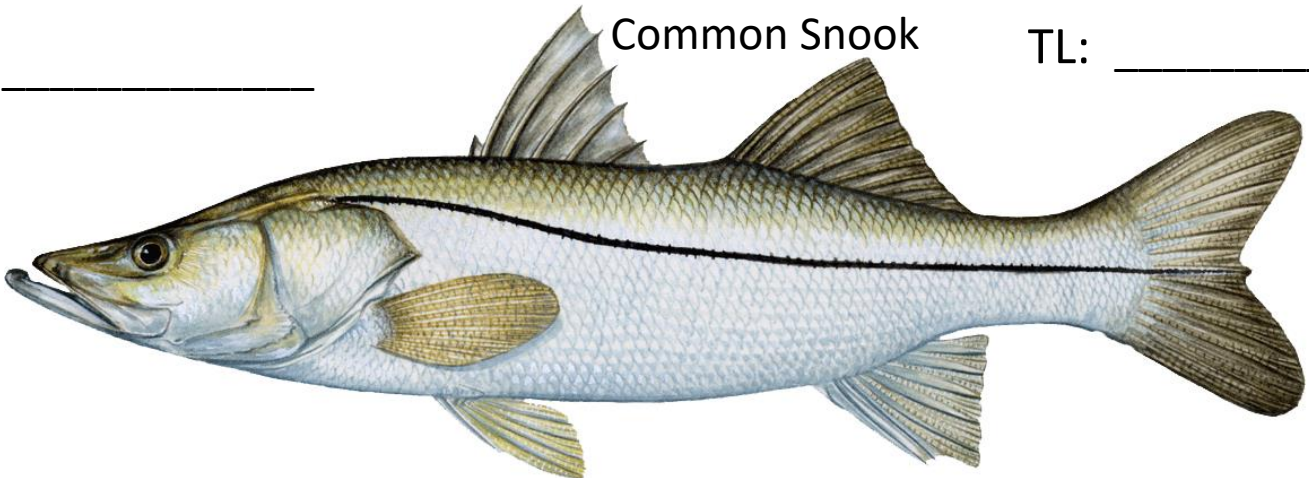


SL: _____

FL: _____

TL: _____

Common Snook



SL: _____

FL: _____

TL: _____

