

ECOHAB CRUISE PHOTO GALLERY

SAMPLING

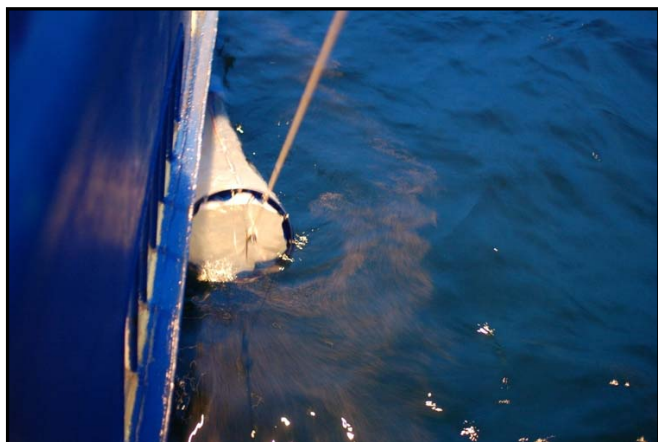
Sampling from the ship's deck.



Plankton net deployment



Plankton net retrieval



Surface population of *Trichodesmium* being collected through a plankton net

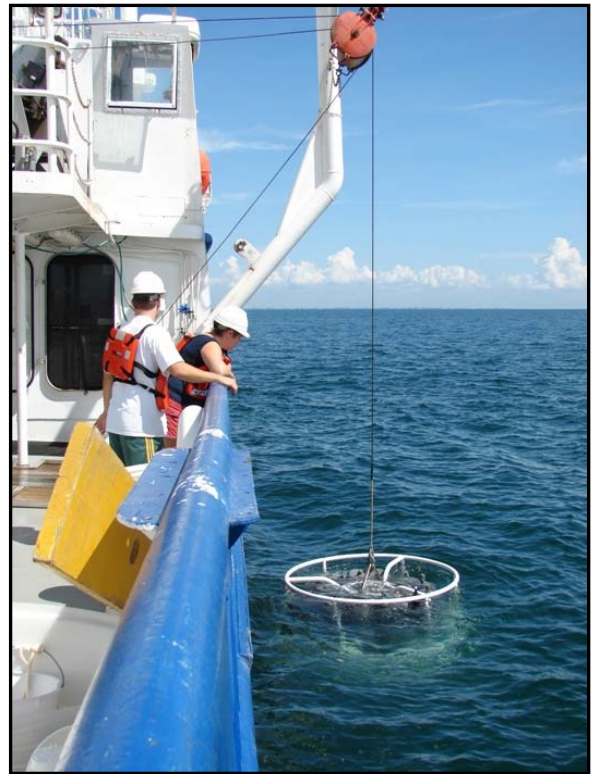


Washing down a plankton net after deployment

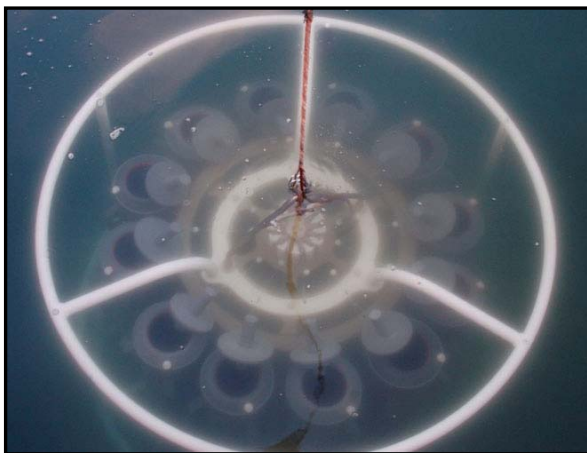




CTD deployment



CTD retrieval



Deployed CTD rosette with open Niskin bottles



Water collection from Niskin bottles after deployment



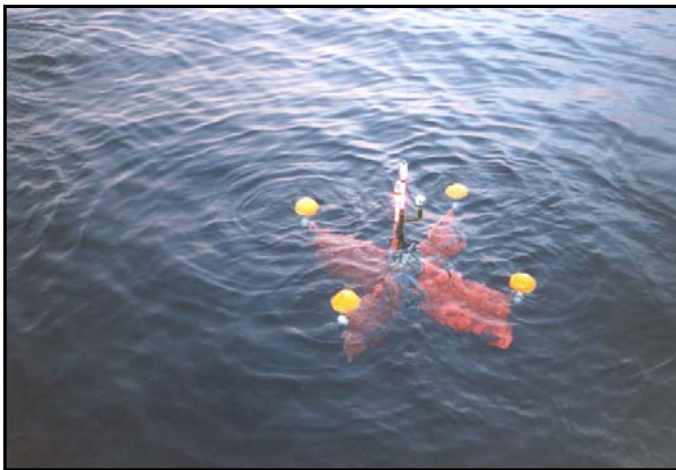
Water collection from CTD after deployment



Radiobeacon drogue deployment



Radiobeacon drogue deployment



Radiobeacon drogue recovery



Radiobeacon drogue recovery



Radiobeacon drogue recovery



Collection of surface water bucket sample



Isolating (picking) colonies of *Trichodesmium* from a net tow sample for experiments



Concentrating plankton from a net to sample



Concentrated *Trichodesmium* sample



Surface sample collection



Water samples from different parts of *Karenia* bloom showing the influence of different concentrations on water color. Darker waters have the highest *Karenia* concentrations.



Sieving out zooplankton from water samples for experiments



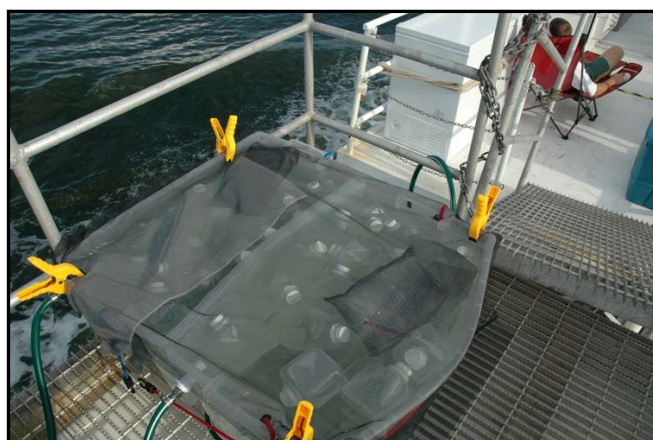
Sample filtration



Concentration of zooplankton net samples on deck



On-deck incubator for bioassay experiments examining the influence of changing carbon dioxide concentration on algal physiology



On-deck incubator for nutrient uptake measurements. Light levels are controlled by changing the number of screens, and temperature is maintained through flow-through surface seawater.



Large on-deck incubator



Photochemical experiment examining the role of ultraviolet light on producing nutrients from dissolved organic material

Unless otherwise noted, all images are credited to the Florida Fish and Wildlife Conservation Commission and ECOHAB: *Karenia* project affiliates.

