

APPENDIX D

Figure D1. Monthly percentage of oysters developing gametes in the St. Lucie-North (top), St. Lucie-South (middle) and St. Lucie-Central (bottom) study sites from 2005 – 2018 and the sum of the mean daily flow rate at the S80, S97, S49 and Gordy structures as recorded by the South Florida Water Management District. Asterisks indicate months when live oysters were not available for analysis.	150
Figure D2. Monthly percentage of oysters developing gametes in the Loxahatchee-North (top) and Loxahatchee-South (bottom) study sites from 2005 – 2018 and the sum of the mean daily flow rate at the Lainhart Dam and S46 structures as recorded by the U.S. Geological Survey and the South Florida Water Management District.	151
Figure D3. Monthly percentage of oysters undergoing active gametogenesis in the St. Lucie-North (top), St. Lucie-South (middle) and St. Lucie-Central (bottom) study sites from 2005 – 2018 and the sum of the mean daily flow rate at the S80, S97, S49 and Gordy structures as recorded by the South Florida Water Management District. Asterisks indicate months when live oysters were not available for analysis.	152
Figure D4. Monthly percentage of oysters undergoing active gametogenesis in the Loxahatchee-North (top) and Loxahatchee-South (bottom) study sites from 2005 – 2018 and the sum of the mean daily flow rate at the Lainhart Dam and S46 structures as recorded by the U.S. Geological Survey and the South Florida Water Management District.	153
Figure D5. Mean monthly number (\pm S.D.) of oyster spat recruits per shell at St. Lucie-North Station 1 (top), Station (middle) and Station 3 (bottom) from 2005 – 2018 and the sum of the mean daily flow rate at the S80, S97, S49 and Gordy structures as recorded by the South Florida Water Management District. Asterisks indicate months when live oysters were not available for analysis.	154
Figure D6. Mean monthly number (\pm S.D.) of oyster spat recruits per shell at St. Lucie-South Station 1 (top), Station (middle) and Station 3 (bottom) from 2005 – 2018 and the sum of the mean daily flow rate at the S80, S97, S49 and Gordy structures as recorded by the South Florida Water Management District. Asterisks indicate months when live oysters were not available for analysis.	155
Figure D7. Mean monthly number (\pm S.D.) of oyster spat recruits per shell at St. Lucie-Central Station 1 (top), Station (middle) and Station 3 (bottom) from 2005 – 2018 and the sum of the mean daily flow rate at the S80, S97, S49 and Gordy structures as recorded by the South Florida Water Management District. Asterisks indicate months when live oysters were not available for analysis.	156
Figure D8. Mean monthly number (\pm S.D.) of oyster spat recruits per shell at Loxahatchee-North Station 1 (top), Station (middle) and Station 3 (bottom) from 2005 – 2018 and the sum of the mean daily flow rate at the Lainhart Dam and S46 structures as recorded by the U.S. Geological Survey and the South Florida Water Management District.	157
Figure D9. Mean monthly number (\pm S.D.) of oyster spat recruits per shell at Loxahatchee-South Station 1 (top), Station (middle) and Station 3 (bottom) from 2005 – 2018 and the sum of the mean daily flow rate at the Lainhart Dam and S46 structures as recorded by the U.S. Geological Survey and the South Florida Water Management District.	158

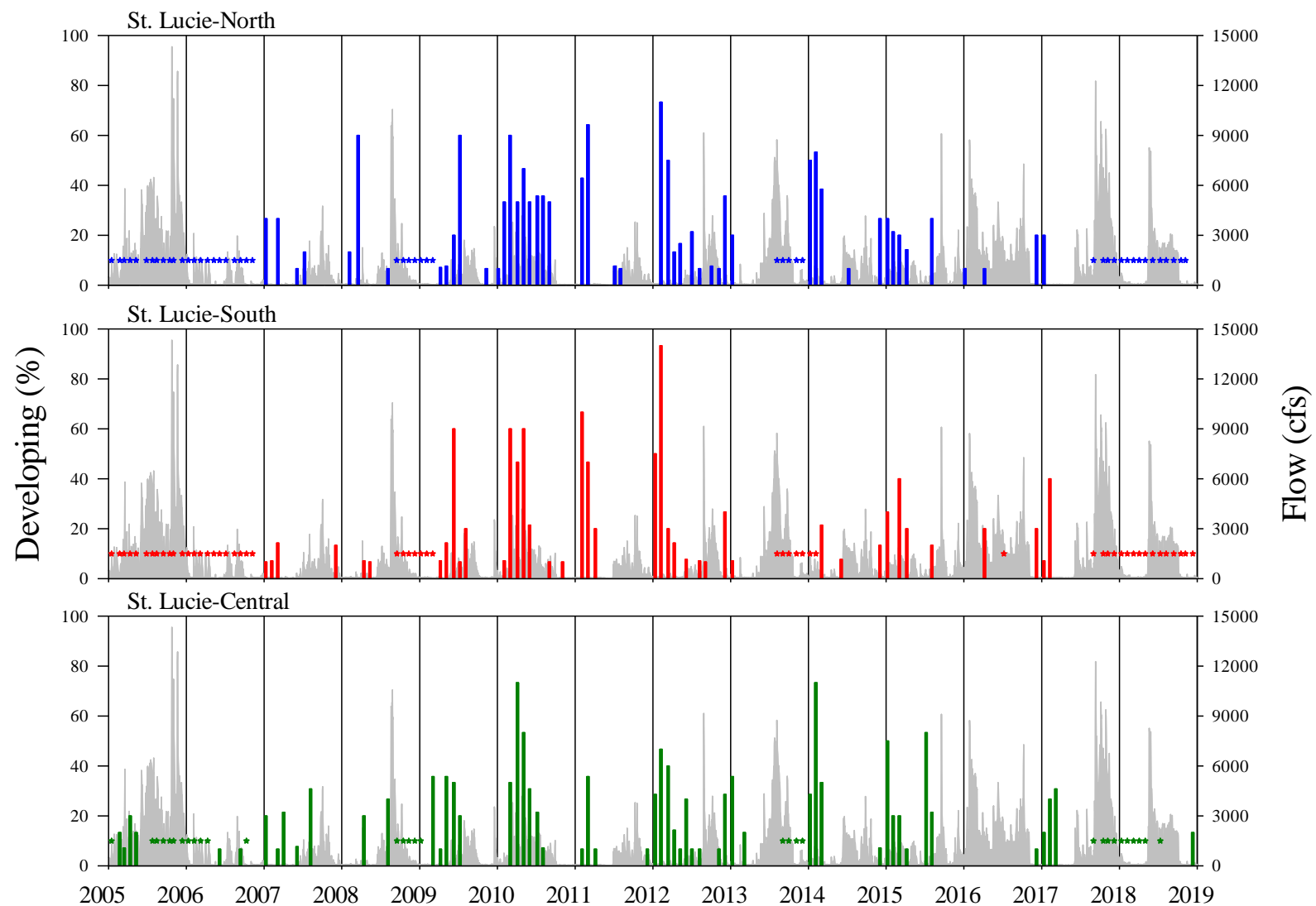


Figure D1. Monthly percentage of oysters developing gametes in the St. Lucie-North (top), St. Lucie-South (middle) and St. Lucie-Central (bottom) study sites from 2005 – 2018 and the sum of the mean daily flow rate at the S80, S97, S49 and Gordy structures as recorded by the South Florida Water Management District. Asterisks indicate months when live oysters were not available for analysis.

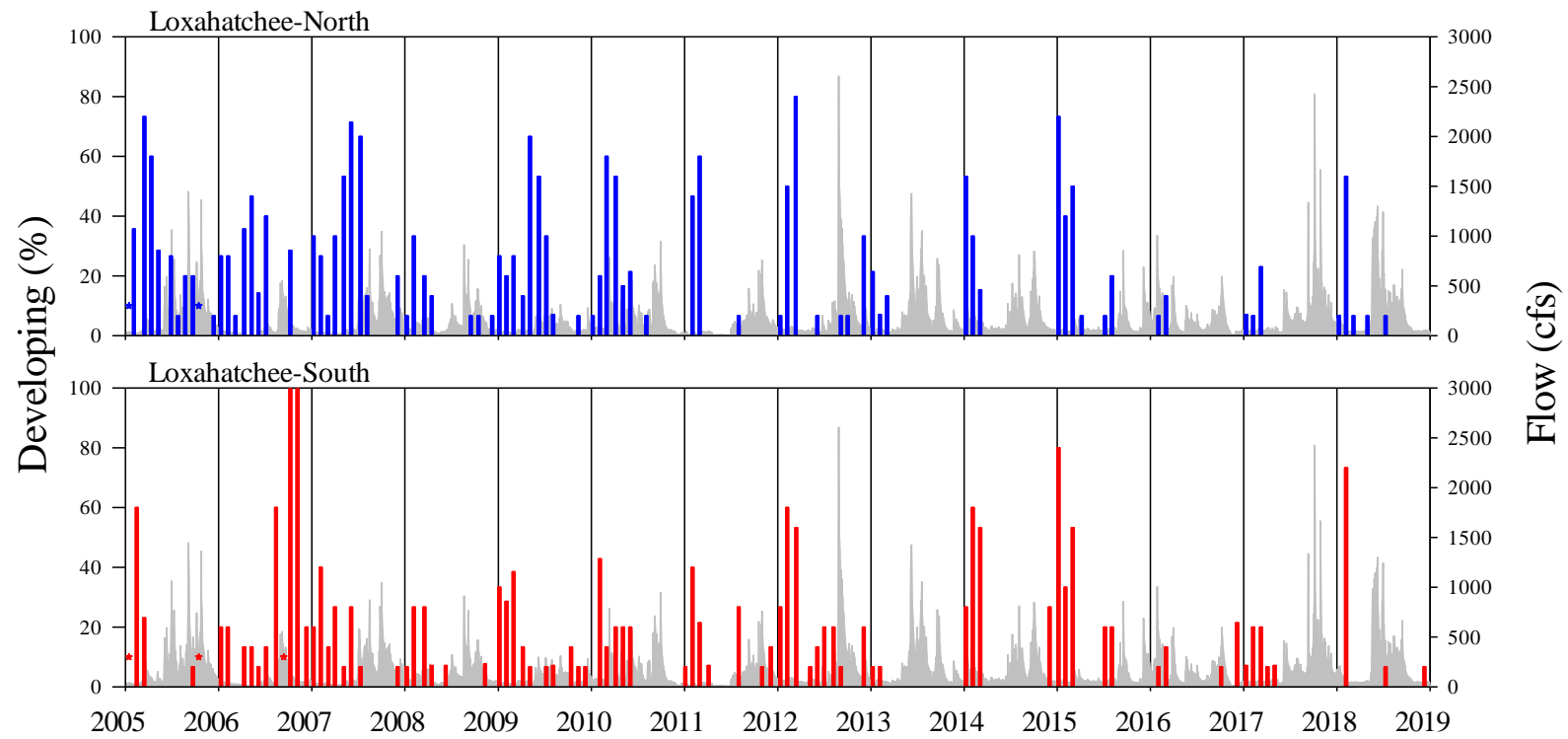


Figure D2. Monthly percentage of oysters developing gametes in the Loxahatchee-North (top) and Loxahatchee-South (bottom) study sites from 2005 – 2018 and the sum of the mean daily flow rate at the Lainhart Dam and S46 structures as recorded by the U.S. Geological Survey and the South Florida Water Management District.

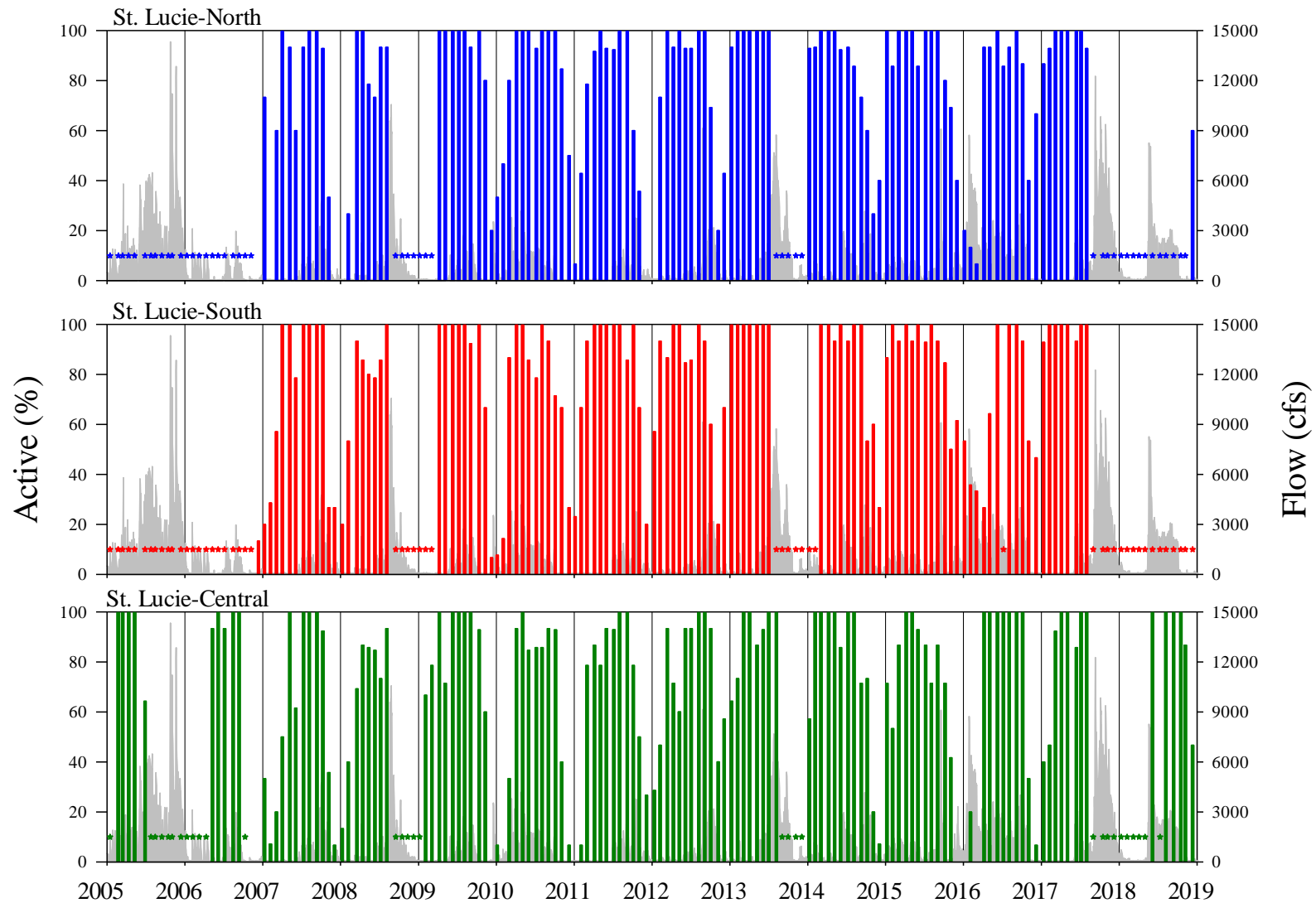


Figure D3. Monthly percentage of oysters undergoing active gametogenesis in the St. Lucie-North (top), St. Lucie-South (middle) and St. Lucie-Central (bottom) study sites from 2005 – 2018 and the sum of the mean daily flow rate at the S80, S97, S49 and Gordy structures as recorded by the South Florida Water Management District. Asterisks indicate months when live oysters were not available for analysis.

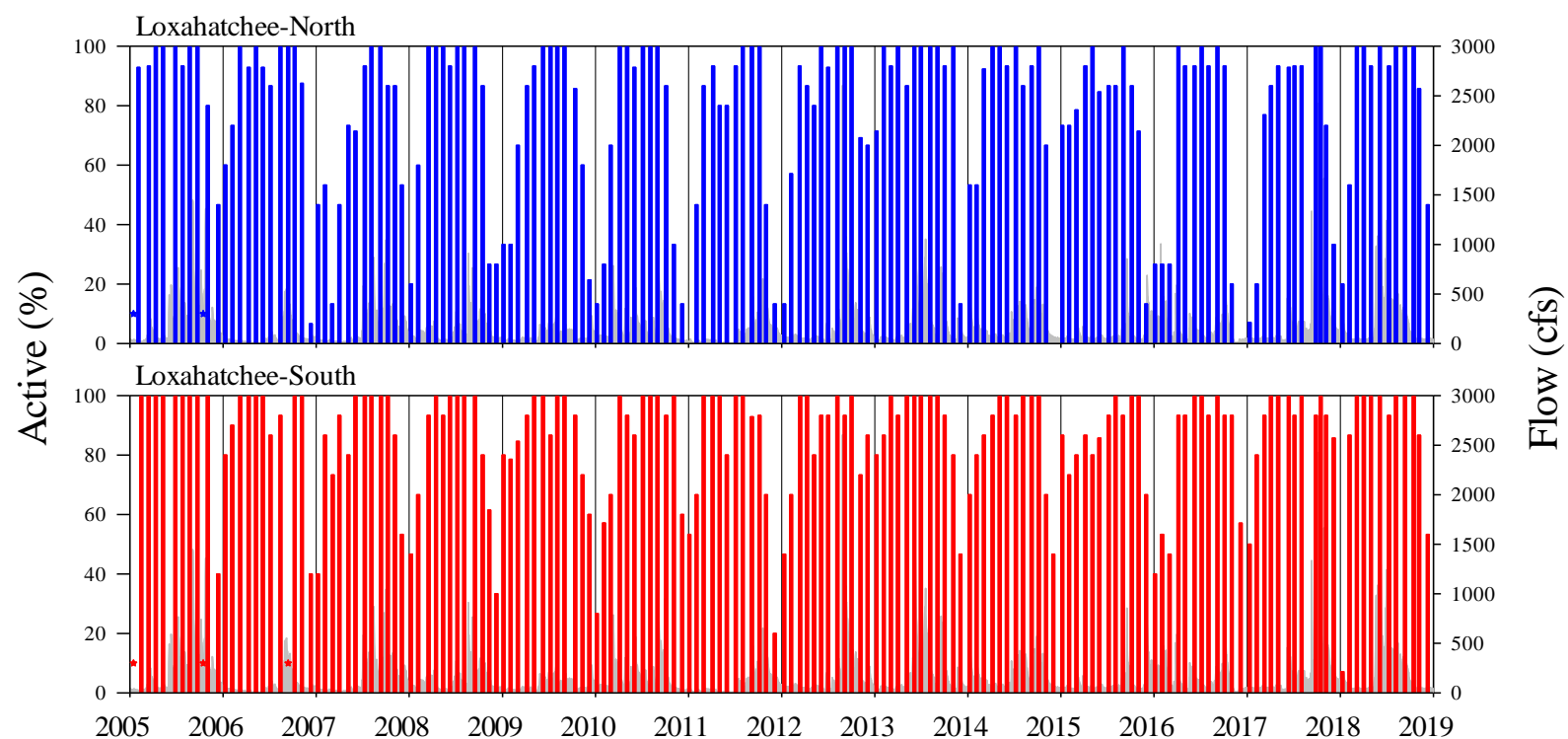


Figure D4. Monthly percentage of oysters undergoing active gametogenesis in the Loxahatchee-North (top) and Loxahatchee-South (bottom) study sites from 2005 – 2018 and the sum of the mean daily flow rate at the Lainhart Dam and S46 structures as recorded by the U.S. Geological Survey and the South Florida Water Management District.

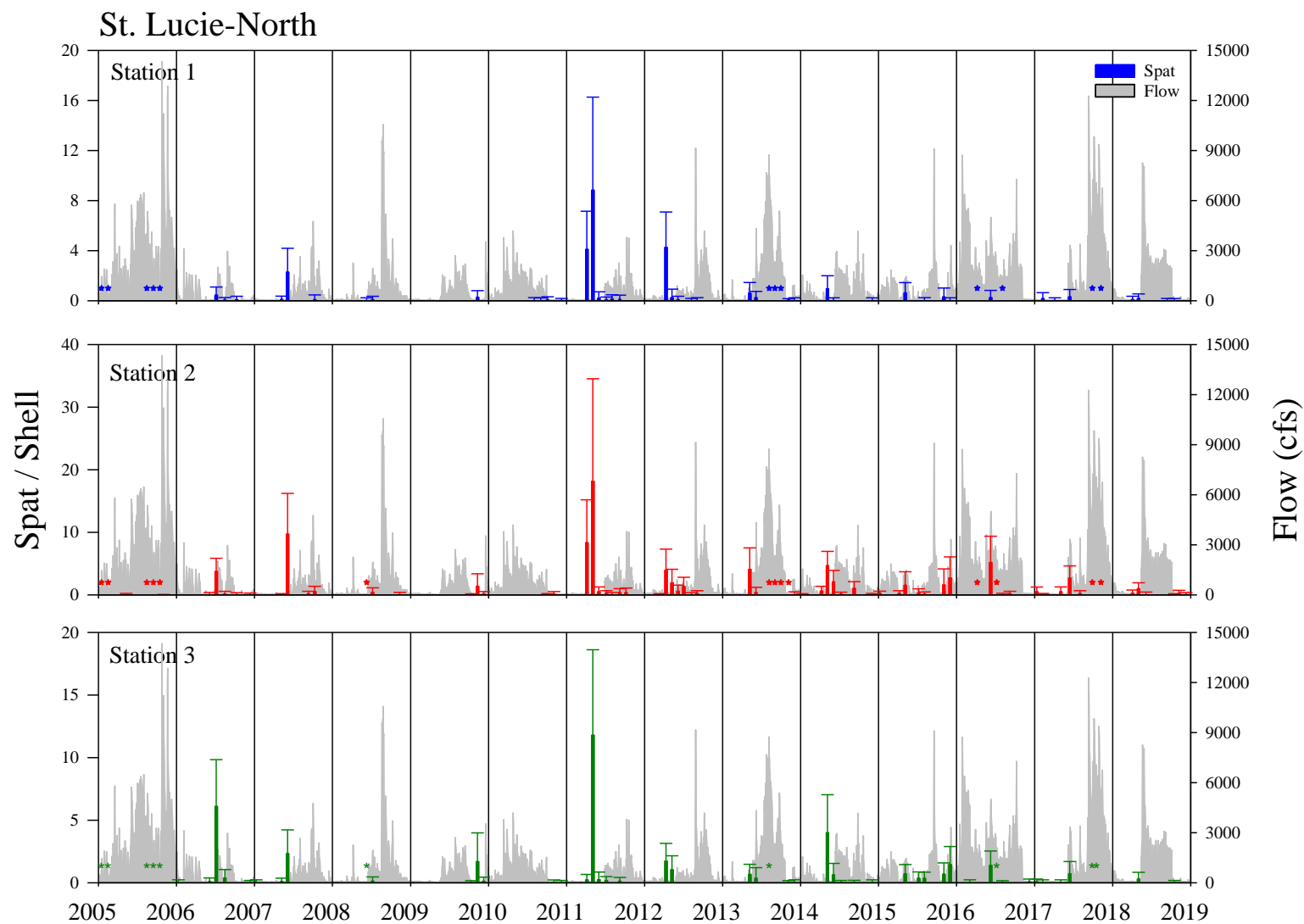


Figure D5. Mean monthly number (\pm S.D.) of oyster spat recruits per shell at St. Lucie-North Station 1 (top), Station (middle) and Station 3 (bottom) from 2005 – 2018 and the sum of the mean daily flow rate at the S80, S97, S49 and Gordy structures as recorded by the South Florida Water Management District. Asterisks indicate months when no spat arrays were retrieved from that station. Please note differences in the y-axis among study sites.

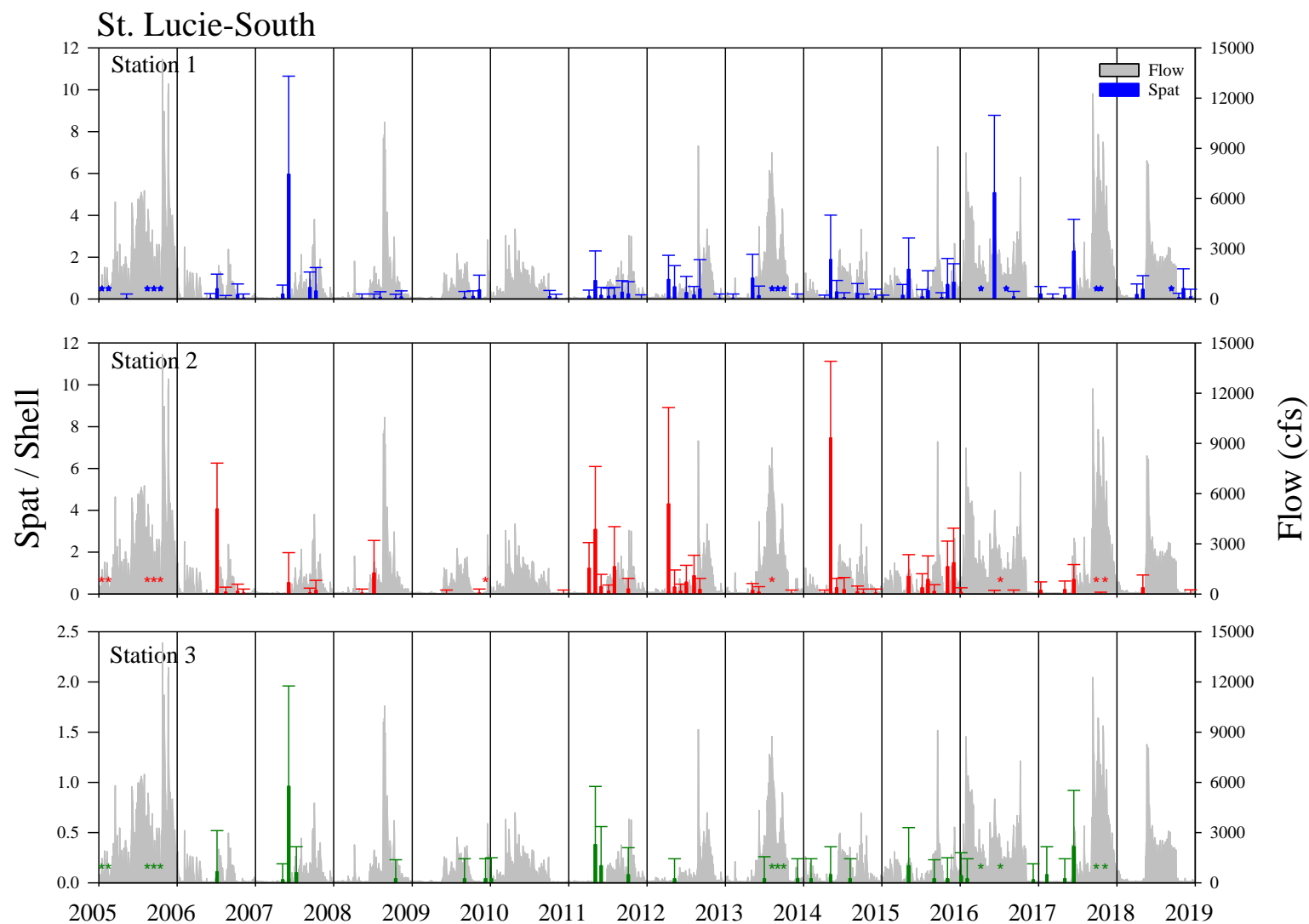


Figure D6. Mean monthly number (\pm S.D.) of oyster spat recruits per shell at St. Lucie-South Station 1 (top), Station (middle) and Station 3 (bottom) from 2005 – 2018 and the sum of the mean daily flow rate at the S80, S97, S49 and Gordy structures as recorded by the South Florida Water Management District. Asterisks indicate months when no spat arrays were retrieved from that station. Please note differences in the y-axis among study sites.

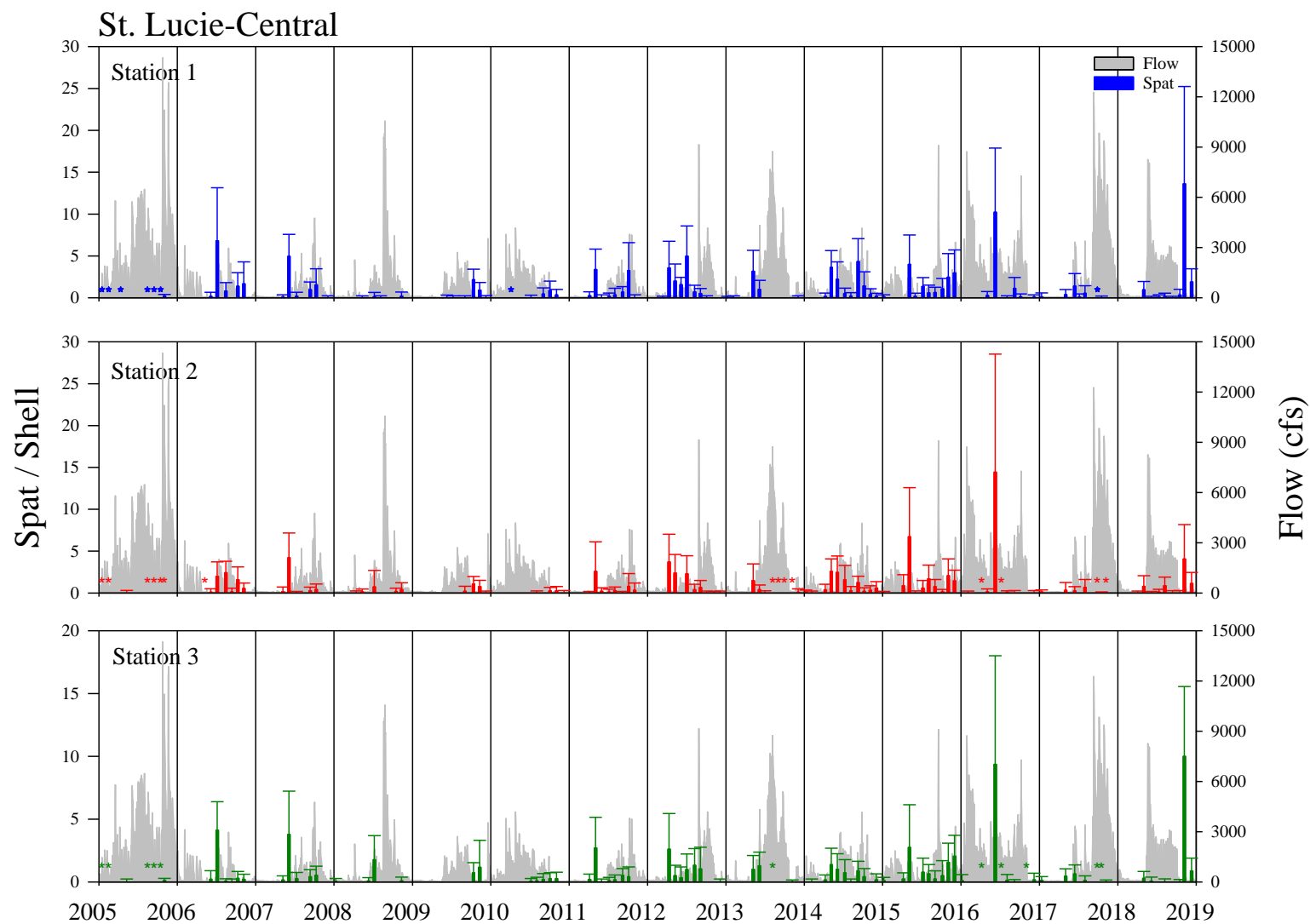


Figure D7. Mean monthly number (\pm S.D.) of oyster spat recruits per shell at St. Lucie-Central Station 1 (top), Station (middle) and Station 3 (bottom) from 2005 – 2018 and the sum of the mean daily flow rate at the S80, S97, S49 and Gordy structures as recorded by the South Florida Water Management District. Asterisks indicate months when no spat arrays were retrieved from that station. Please note differences in the y-axis among study sites.

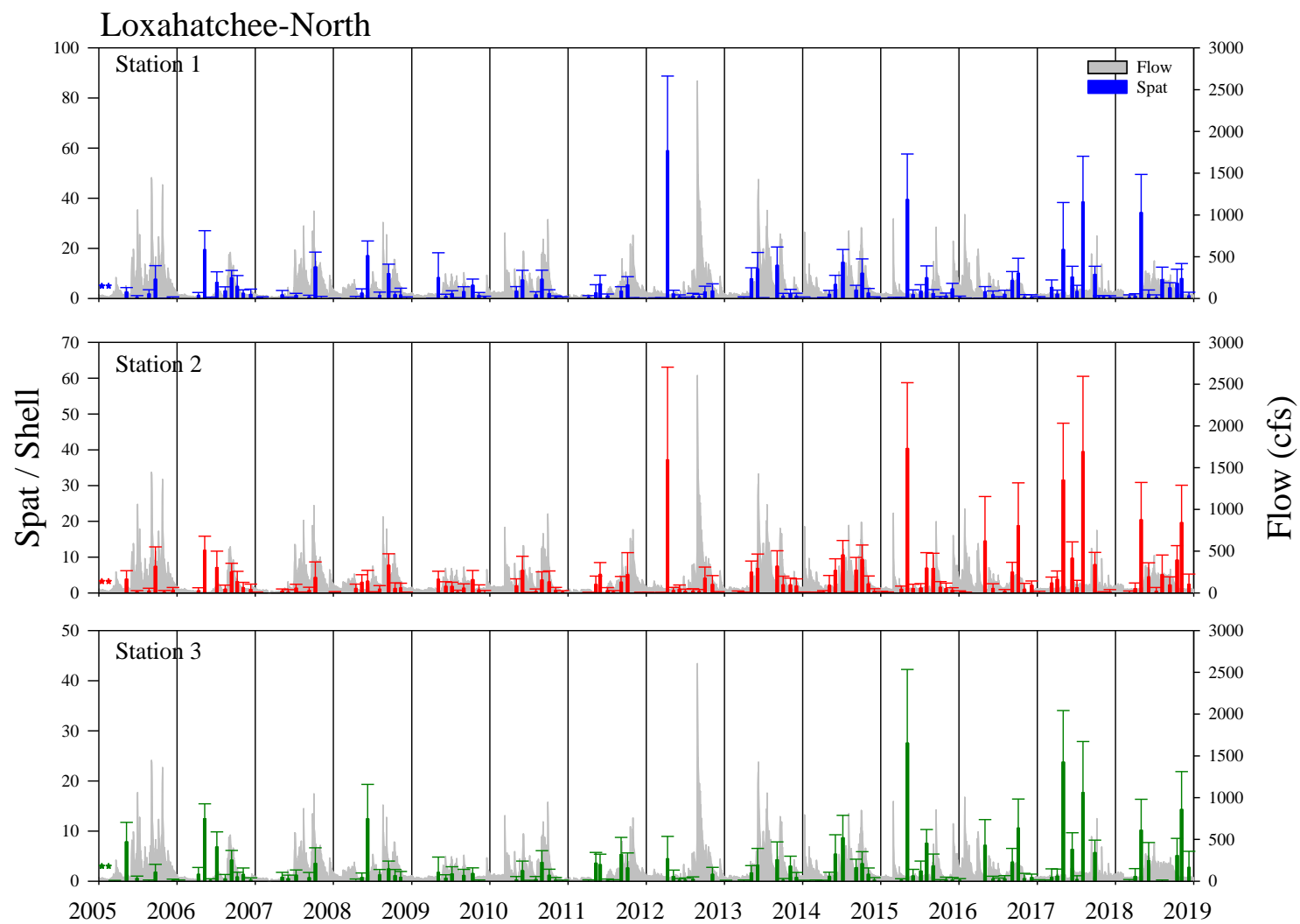


Figure D8. Mean monthly number (\pm S.D.) of oyster spat recruits per shell at Loxahatchee-North Station 1 (top), Station (middle) and Station 3 (bottom) from 2005 – 2018 and the sum of the mean daily flow rate at the Lainhart Dam and S46 structures as recorded by the U.S. Geological Survey and the South Florida Water Management District. Asterisks indicate months when no spat arrays were retrieved from that station. Please note differences in the y-axis among study sites.

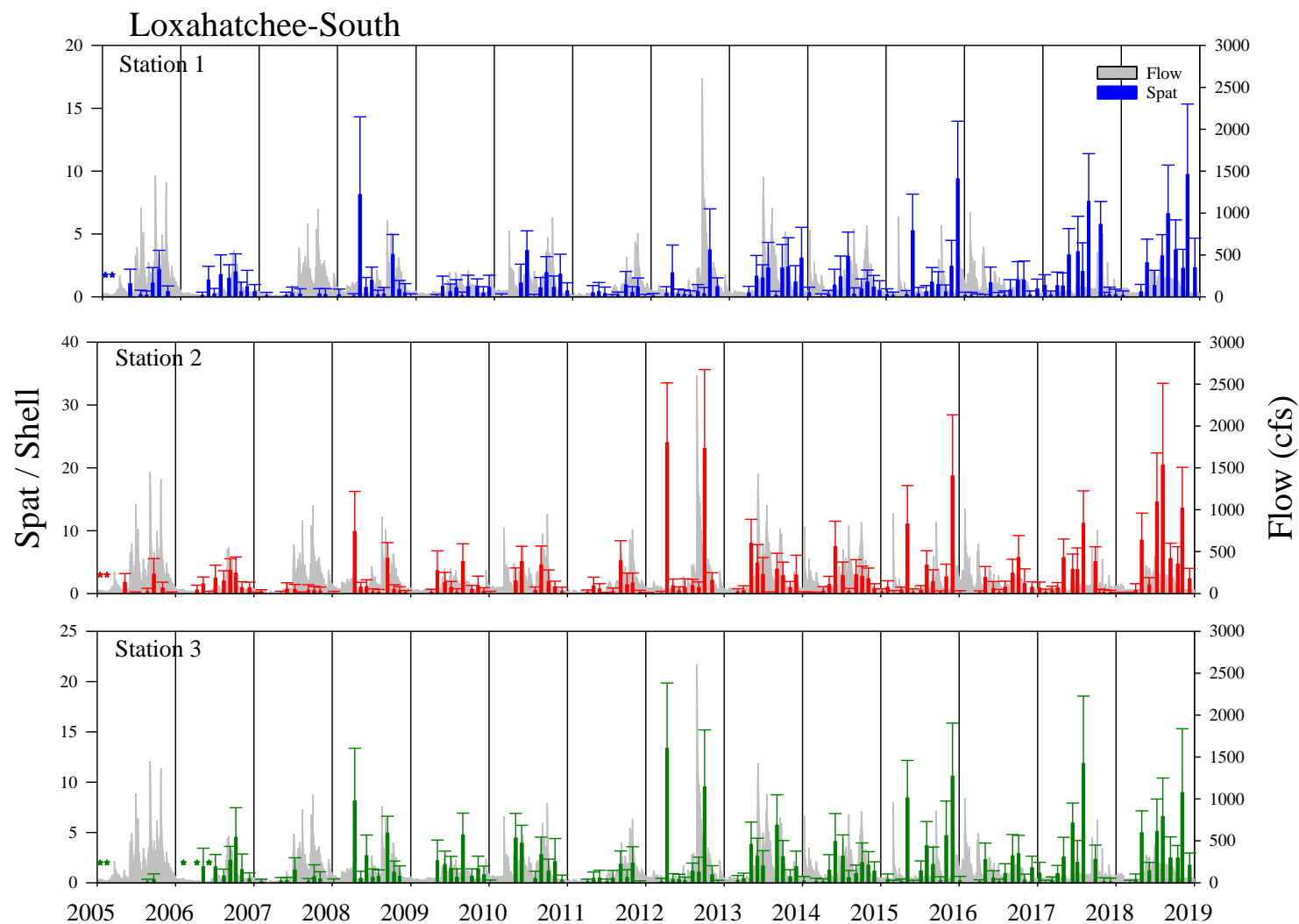


Figure D9. Mean monthly number (\pm S.D.) of oyster spat recruits per shell at Loxahatchee-South Station 1 (top), Station (middle) and Station 3 (bottom) from 2005 – 2018 and the sum of the mean daily flow rate at the Lainhart Dam and S46 structures as recorded by the U.S. Geological Survey and the South Florida Water Management District. Asterisks indicate months when no spat arrays were retrieved from that station. Please note differences in the y-axis among study sites.