

APPENDIX E

Figure E1. Mean monthly shell height (\pm S.D.) of juvenile oysters in closed and open cages planted at stations in St. Lucie-North (top), St. Lucie-South (middle) and St. Lucie-Central (bottom) from 2005 – 2014 and the sum of the mean daily flow rate at the S80, S97, S49 and Gordy structures as recorded by the U.S. Army Corps of Engineers and the South Florida Water Management District.	160
Figure E2. Mean monthly shell height (\pm S.D.) of juvenile oysters in closed and open cages planted at stations in Loxahatchee-North (top) and Loxahatchee-South (bottom) from 2005 – 2014 and the sum of the mean daily flow rate at the Lainhart Dam and S46 structures as recorded by the U.S Geological Survey and the South Florida Water Management District.	161
Figure E3. Monthly percentage of live tagged oysters in closed and open cages planted at stations in St. Lucie-North (top), St. Lucie-South (middle) and St. Lucie-Central (bottom) from 2011 – 2014 and the sum of the mean daily flow rate at the S80, S97, S49 and Gordy structures as recorded by the U.S. Army Corps of Engineers and the South Florida Water Management District.	162
Figure E4. Monthly percentage of live tagged oysters in closed and open cages planted at stations in Loxahatchee-North (top) and Loxahatchee-South (bottom) from 2005 – 2014 and the sum of the mean daily flow rate at the Lainhart Dam and S46 structures as recorded by the U.S Geological Survey and the South Florida Water Management District.	163
Figure E5. Mean monthly mortality (%) of oysters planted into open cages at Station 1 in St. Lucie-Central and Station 2 in Loxahatchee-North from 2015 – 2018. Asterisks indicate months when no live oysters were available for mortality measurements.	164
Figure E6. Mean monthly deployed (hatched bars) and retrieved (solid bars) shell height (\pm S.D.) of oysters planted into open cages at Station 1 in St. Lucie-Central and Station 2 in Loxahatchee-North from 2015 – 2018. Asterisks indicate months when no live oysters were available for mortality measurements.	165

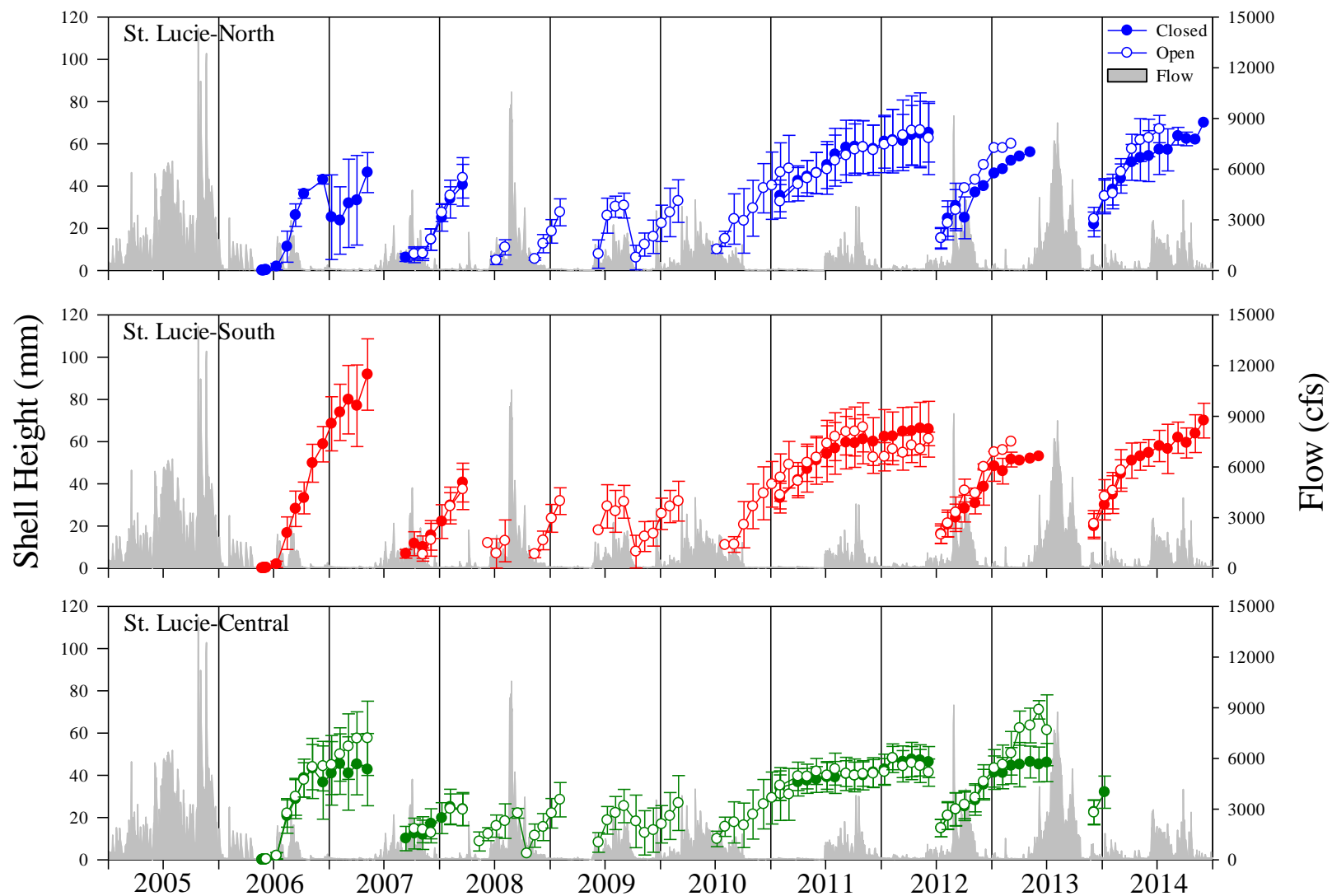


Figure E1. Mean monthly shell height (\pm S.D.) of juvenile oysters in closed and open cages planted at stations in St. Lucie-North (top), St. Lucie-South (middle) and St. Lucie-Central (bottom) from 2005 – 2014 and the sum of the mean daily flow rate at the S80, S97, S49 and Gordy structures as recorded by the U.S. Army Corps of Engineers and the South Florida Water Management District.

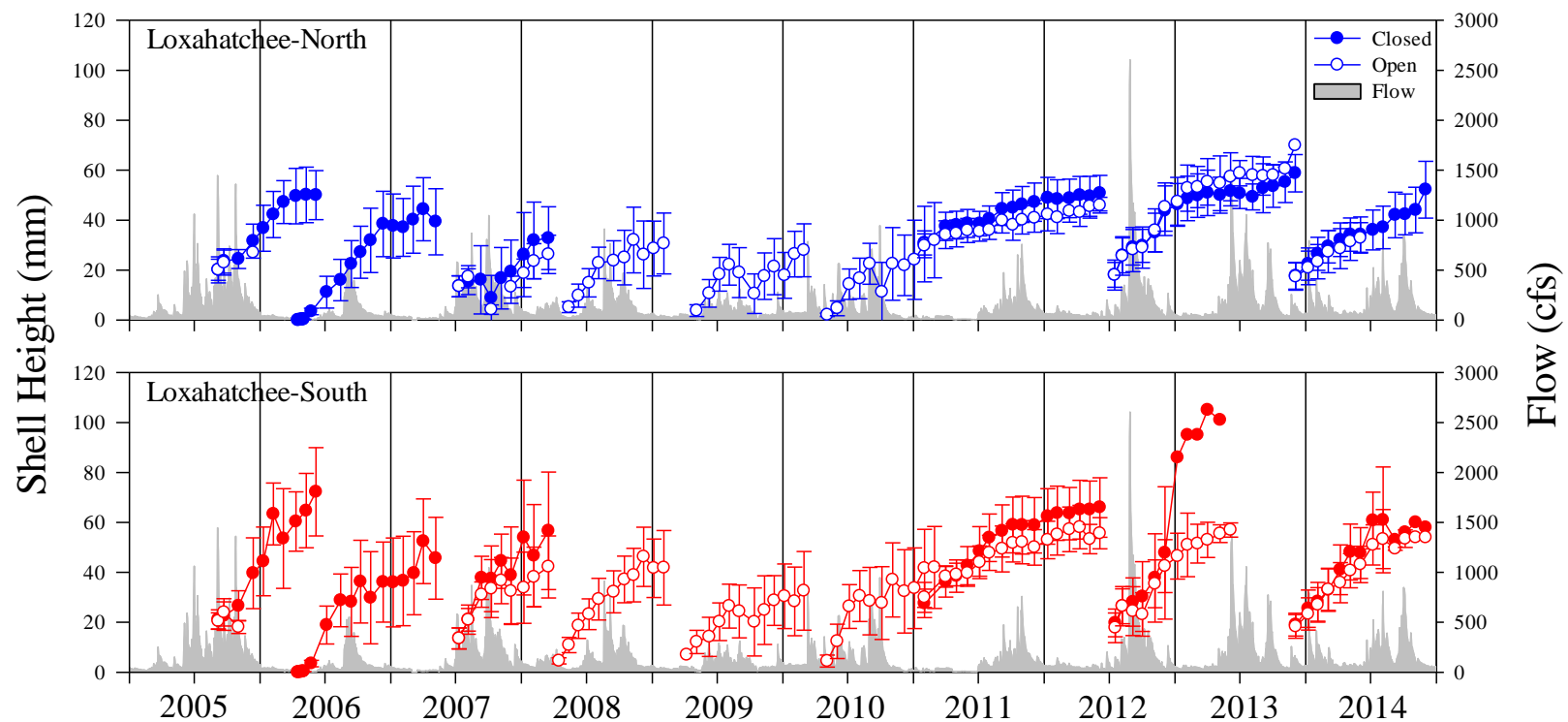


Figure E2. Mean monthly shell height (\pm S.D.) of juvenile oysters in closed and open cages planted at stations in Loxahatchee-North (top) and Loxahatchee-South (bottom) from 2005 – 2014 and the sum of the mean daily flow rate at the Lainhart Dam and S46 structures as recorded by the U.S Geological Survey and the South Florida Water Management District.

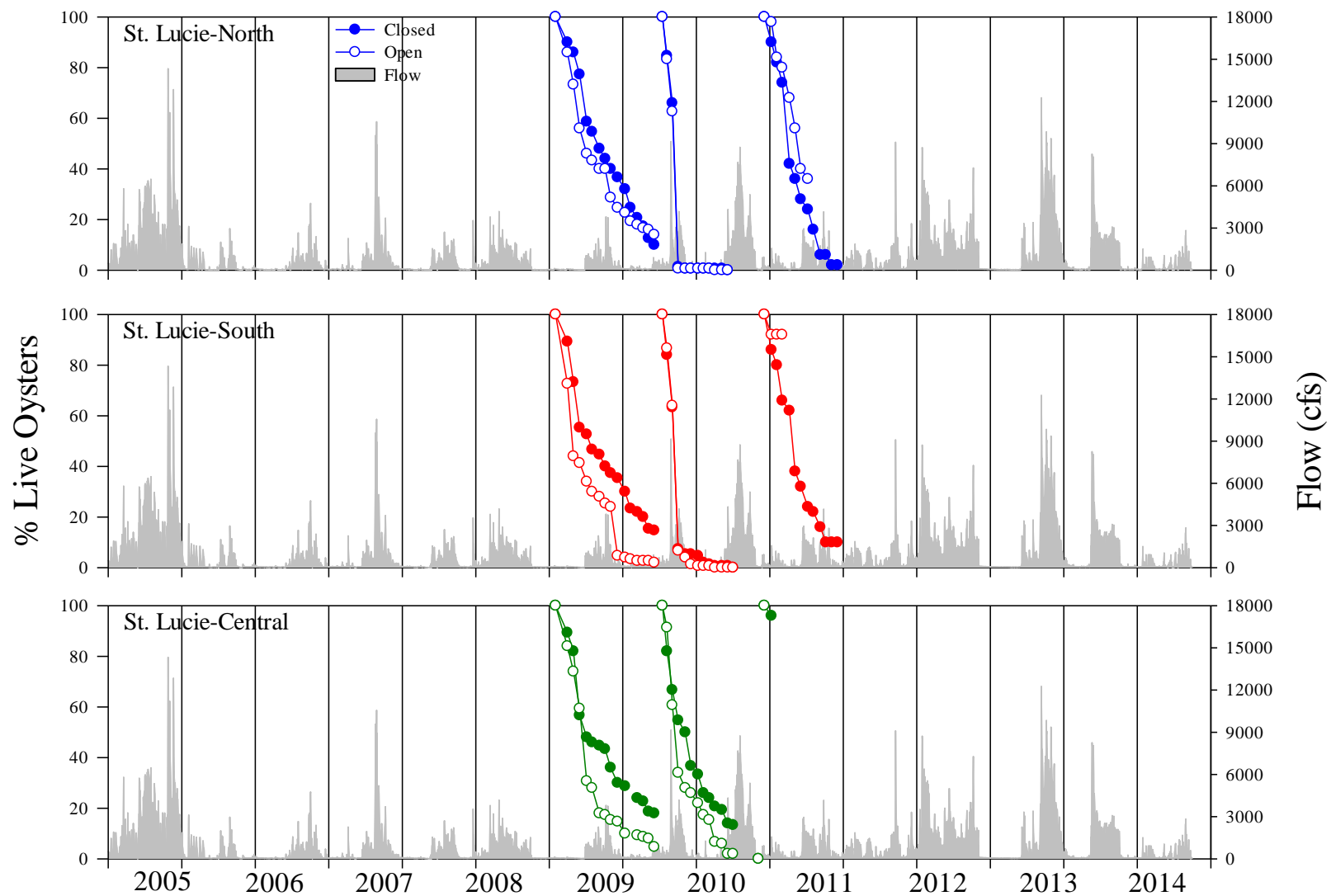


Figure E3. Monthly percentage of live tagged oysters in closed and open cages planted at stations in St. Lucie-North (top), St. Lucie-South (middle) and St. Lucie-Central (bottom) from 2011 – 2014 and the sum of the mean daily flow rate at the S80, S97, S49 and Gordy structures as recorded by the U.S. Army Corps of Engineers and the South Florida Water Management District.

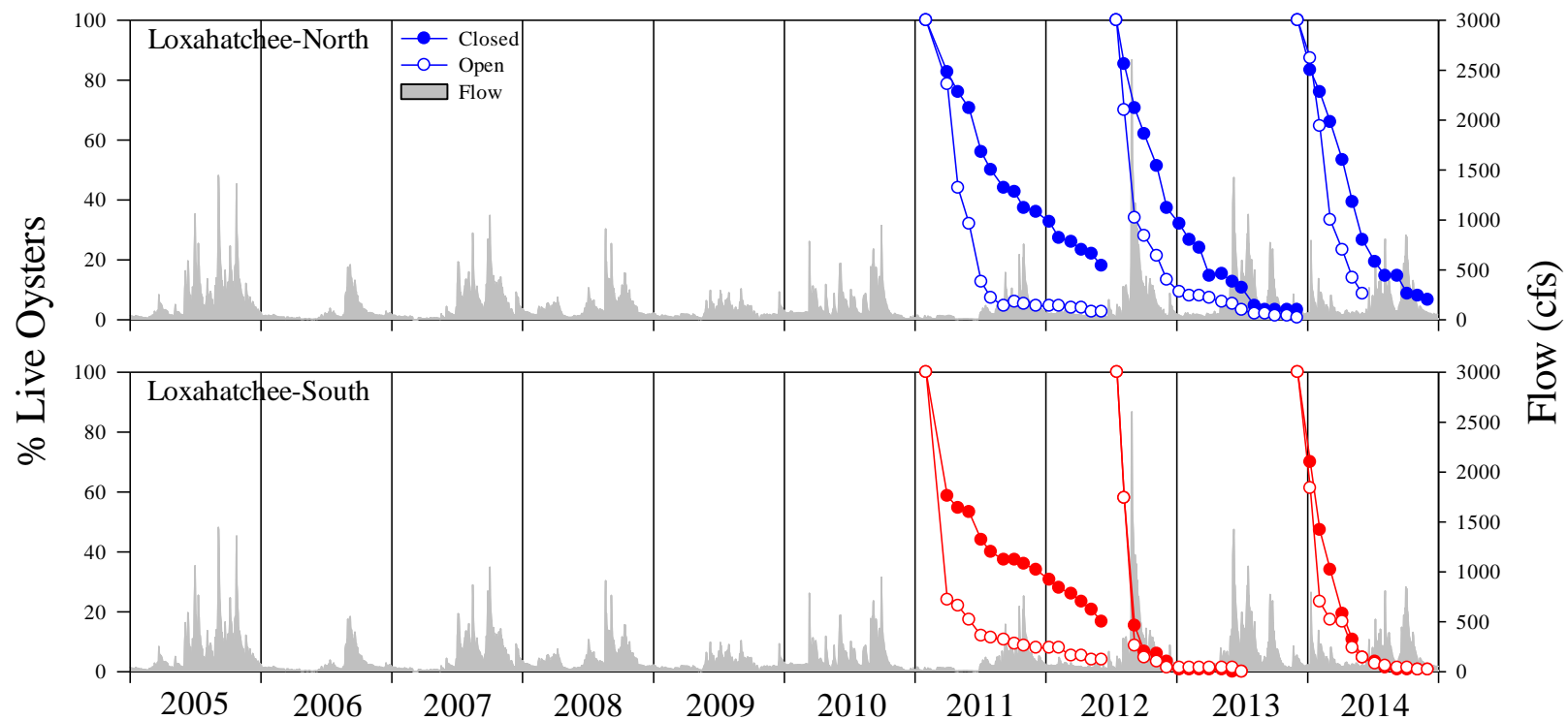


Figure E4. Monthly percentage of live tagged oysters in closed and open cages planted at stations in Loxahatchee-North (top) and Loxahatchee-South (bottom) from 2005 – 2014 and the sum of the mean daily flow rate at the Lainhart Dam and S46 structures as recorded by the U.S Geological Survey and the South Florida Water Management District.

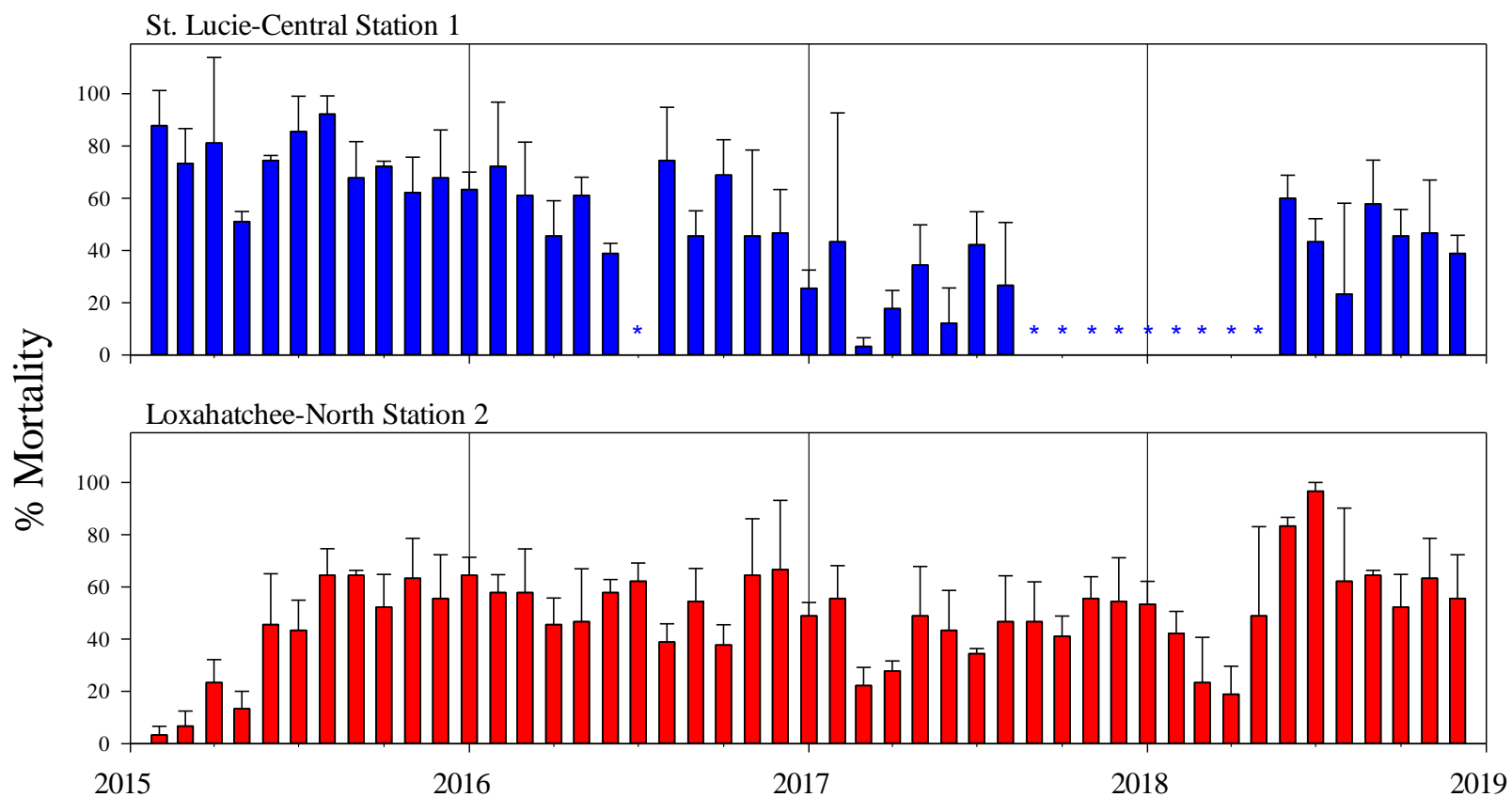


Figure E5. Mean monthly mortality (%) of oysters planted into open cages at Station 1 in St. Lucie-Central and Station 2 in Loxahatchee-North from 2015 – 2018. Asterisks indicate months when no live oysters were available for mortality measurements.

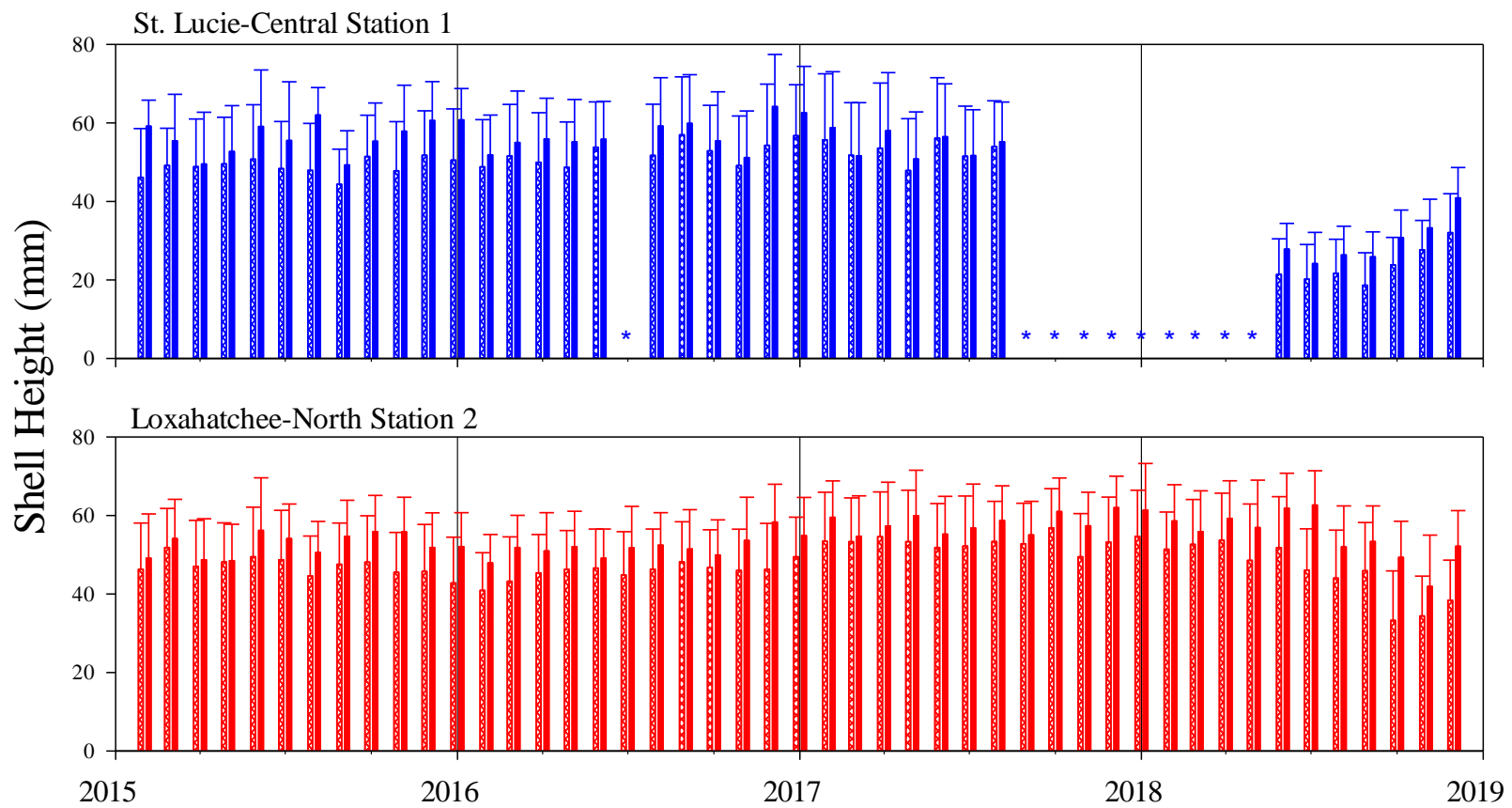


Figure E6. Mean monthly deployed (hatched bars) and retrieved (solid bars) shell height (\pm S.D.) of oysters planted into open cages at Station 1 in St. Lucie-Central and Station 2 in Loxahatchee-North from 2015 – 2018. Asterisks indicate months when no live oysters were available for mortality measurements.