

Oyster Mapping and Monitoring Resources

Kara Radabaugh, Ryan Moyer, Steve Geiger

*Florida Fish and Wildlife Conservation
Commission*

Fish and Wildlife Research Institute



Horseshoe Cove and Suwannee Sound Workshop

9 March 2021



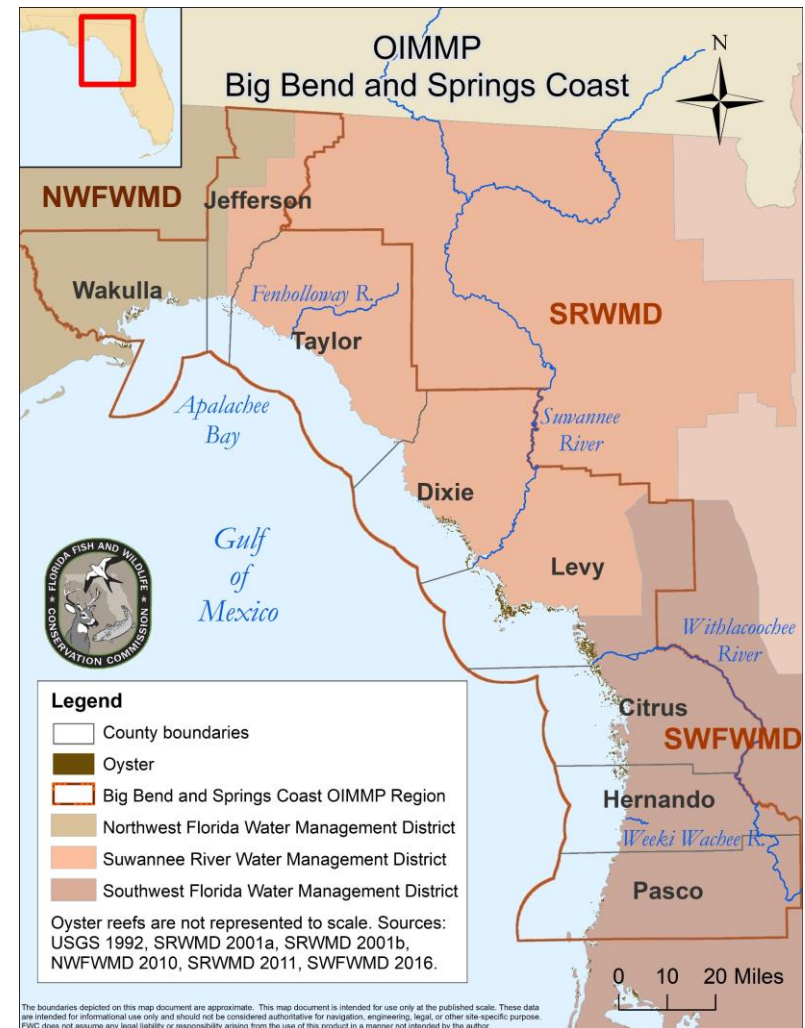
Oyster Integrated Mapping and Monitoring Program Resources

- Report with regional chapters

<https://myfwc.com/research/habitat/coastal-wetlands/projects/oimmp>

- Workshops and resources website

<https://ocean.floridamarine.org/OIMMP/>



Oyster Beds in Florida Map



- Statewide oyster map available for shapefile and kmz download at <http://geodata.myfwc.com/datasets/oyster-beds-in-florida>
- Please share new maps to add to statewide compilation!

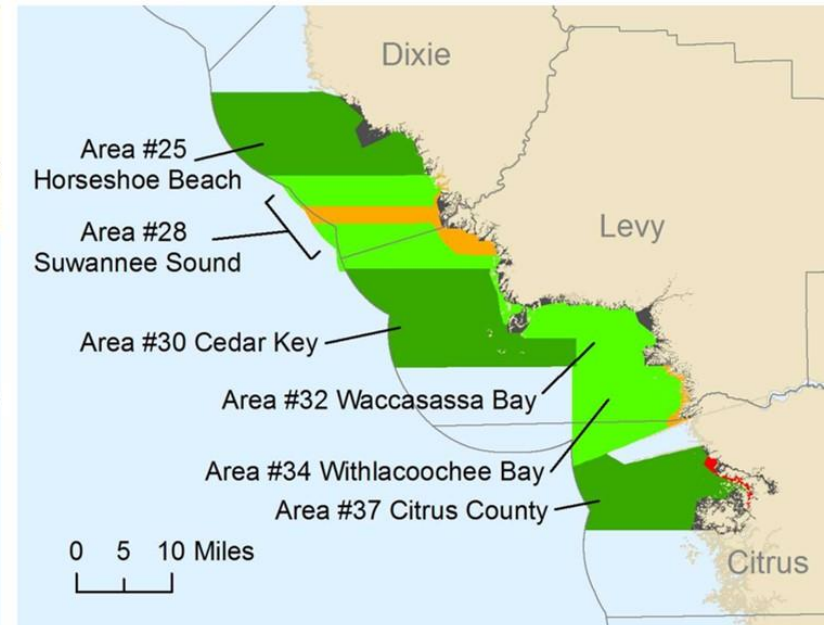
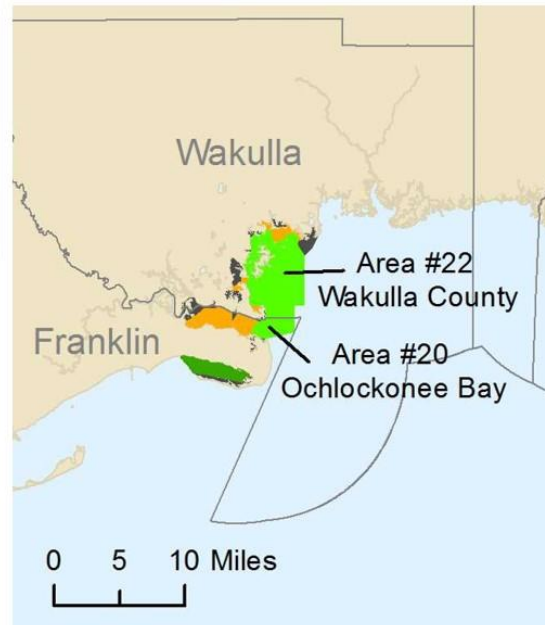
FDACS Shellfish Harvesting Areas



Legend

- Approved
- Conditionally Approved
- Conditionally Restricted
- Restricted
- Prohibited

These data are intended for informational use only and should not be considered authoritative for navigation, engineering, legal, or other site-specific purpose. FWC does not assume any legal liability or responsibility arising from the use of this product in a manner not intended by the author.

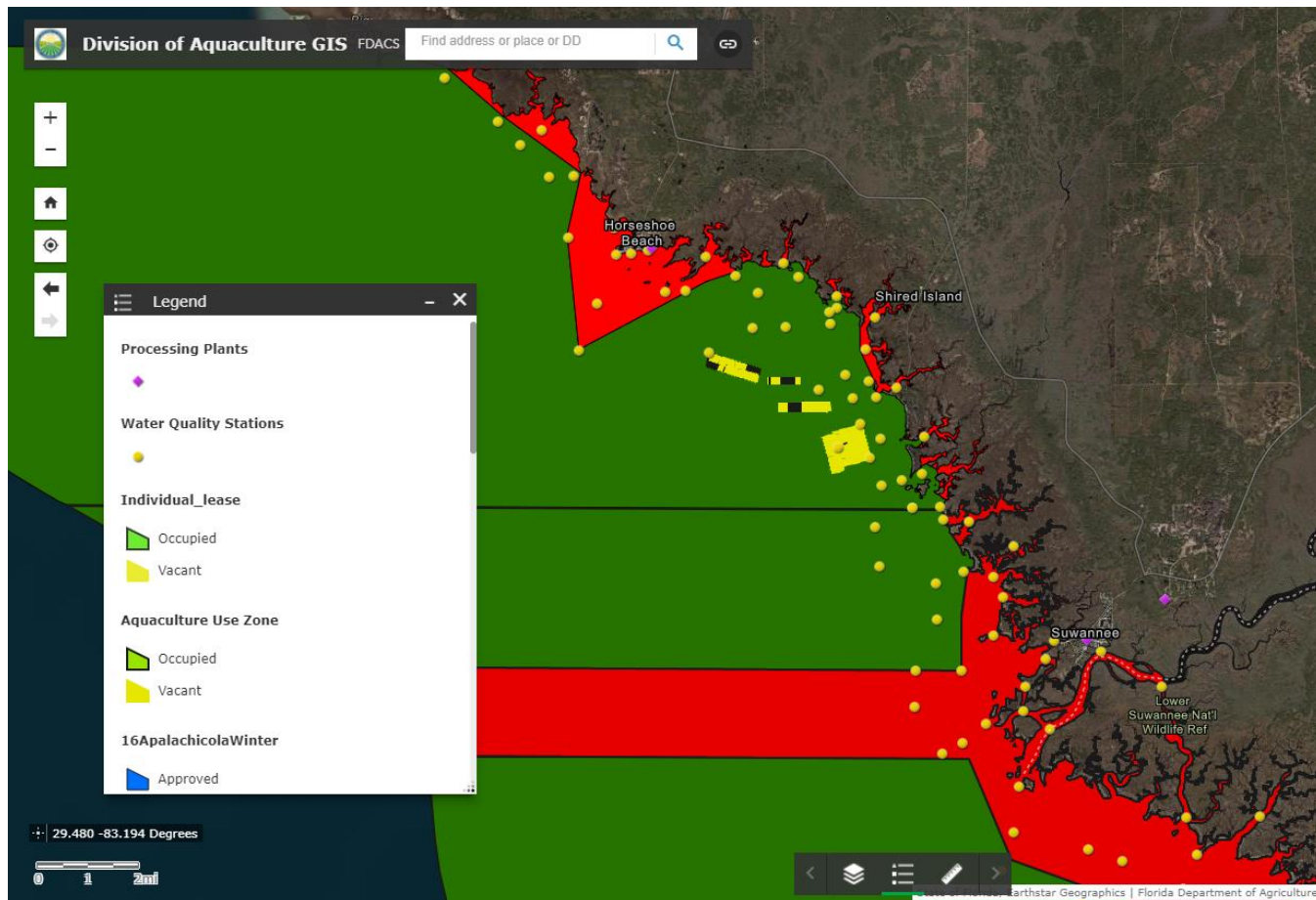


- Maps in each regional chapter
- Shapefiles available for download at <https://geodata.fdacs.gov/datasets/shellfish-harvesting-areas-all-year>

FDACS Resources

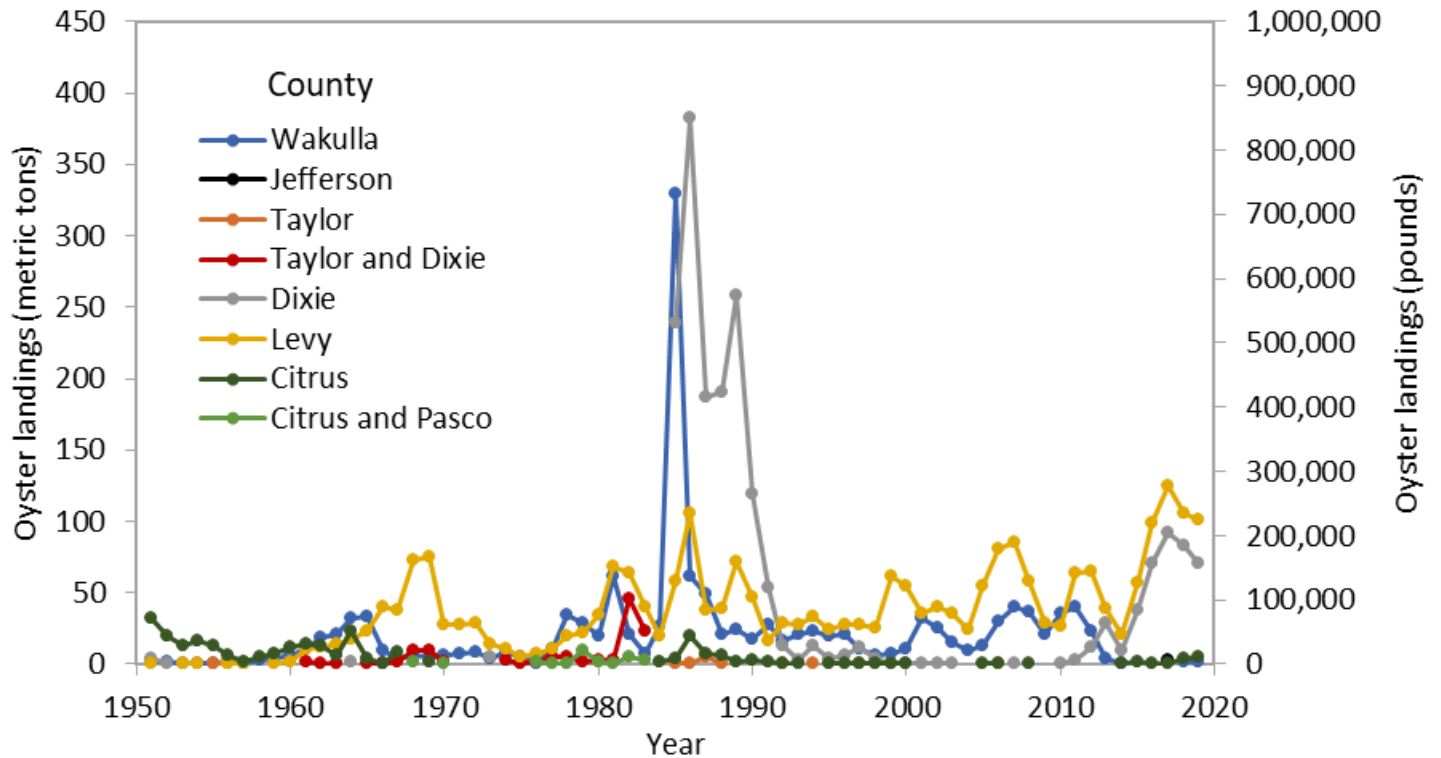
Shellfish Harvesting Areas, leases, water quality stations, processing plants viewable at

<https://fdacs.maps.arcgis.com/apps/webappviewer/index.html?id=57f7d4b7d900496d99891f22681c66d0>




A vertical photograph showing a rocky shoreline with water. The rocks are dark and jagged, partially submerged. The water is calm, reflecting the sky and the rocks. In the background, there is a line of green trees under a clear blue sky. A decorative graphic consisting of two overlapping circles is overlaid on the top right of the image.

- OIMMP chapters include annual oyster harvest data



Commercial Harvest Data



Ask FWC About Contact News Calendar Get Involved

Florida Fish and Wildlife Conservation Commission

Fishing Boating Hunting Licenses & Permits Wildlife Viewing Wildlife & Habitats Research Education Conservation

Commercial Fisheries Landings Summaries

Filters

Years: 2019 - 2019

Species Set: ☐ Aquaculture ☒ Food and Bait ☐ Marine Life

Species *:

- ALL FOOD AND BAIT
- AMBERJACKS
- BAIT FISH
- BALLYHOO
- BLUE RUNNER
- BLUEFISH
- BUMPER, ATLANTIC
- CATFISH
- CHUB, BERMUDA
- CLAMS, HARD, BUTTON
- CLAMS, HARD, CHERRY
- CLAMS, HARD, CHOWDER
- CLAMS, HARD, LITTLENECK
- CLAMS, HARD, MIDDLENECK
- CLAMS, HARD, TOPNECK
- CLAMS, HARD, UNGRADED
- CLAMS, SUNRAY VENUS

Standard Output Columns

Year, Species, and Trips

Additional Output Columns

- ☒ Area, Area Description, Pounds, Average Price, and Estimated Value
- ☐ County, Pounds, Average Price, and Estimated Value
- ☐ Coast, Pounds, Average Price, and Estimated Value
- ☐ Month, Pounds, Average Price, and Estimated Value
- ☐ Statewide: Pounds, Average Price, and Estimated Value

Actions

[Export Report](#)

* When species are selected, only they will be included in the report. Otherwise, all shown species will be included.
* Number of trips cannot be summed across species because more than one species can be harvested on a single trip.

Commercial Fisheries Landings Summaries - About - Privacy Policy
Contact Number: 727-896-9626

- State assumed control of reporting landings in 1984 and instituted a mandatory trip-ticket program in 1986
- 1984 – present data available from <https://public.myfwc.com/FWRI/PFDM/ReportCreator.aspx>

Commercial Harvest Data

Table A-1. Reported commercial yields of pounds of oyster meats harvested annually 1950–1983.

Year	Published east coast total	Published west coast total	Published statewide total	Bay, Gulf, and Washington	Bay and Gulf	Bay	Bay and Washington
1950†	22,715	872,553	895,248				
1951			735,304			42,368	
1952	20,907	542,080	562,987			30,304	
1953*	21,576	563,780	585,356		59,956		
1954	17,907	667,589	685,496		67,992		
1955	19,340	630,241	649,581	48,141			
1956	32,304	856,431	888,735		89,830		
1957	24,754	710,124	734,878		68,961		
1958	29,759	794,970	824,729		60,206		
1959	40,045	1,414,953	1,454,998		93,934		
1960*	44,644	1,930,756	1,975,400		89,458		
1961	72,542	3,254,059	3,326,601		127,367		
1962	67,091	4,952,680	5,019,771		259,664		

1950 – 1983 data from printed copies of summary of Florida commercial marine fish landings. Data are available in OIMMP Report Appendix A and at <https://ocean.floridamarine.org/OIMMP/>



OIMMP Conclusion

- Email kara.radabaugh@myfwc.com to join OIMMP (or CHIMMP) email lists
 - Ongoing updates to OIMMP chapters and statewide mapping
 - Share recent oyster publications
 - Workshop planned for 2021-2022