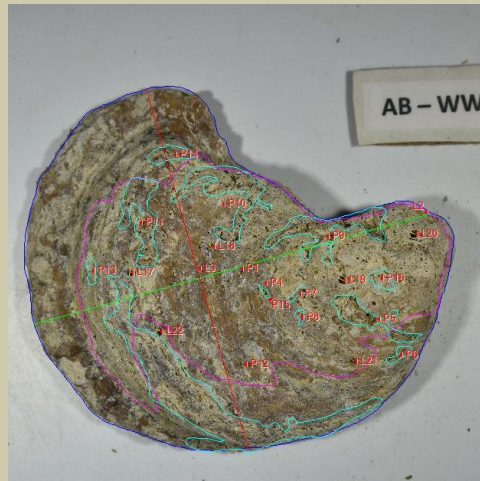
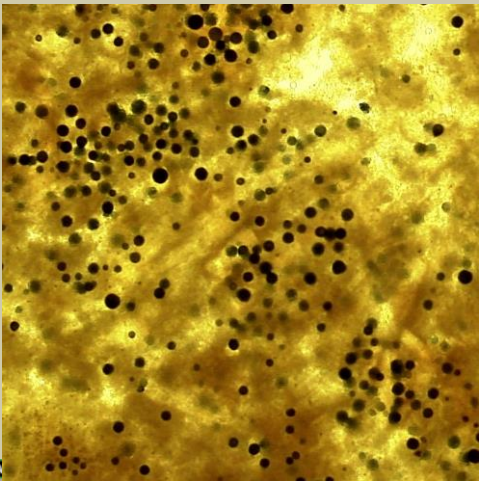
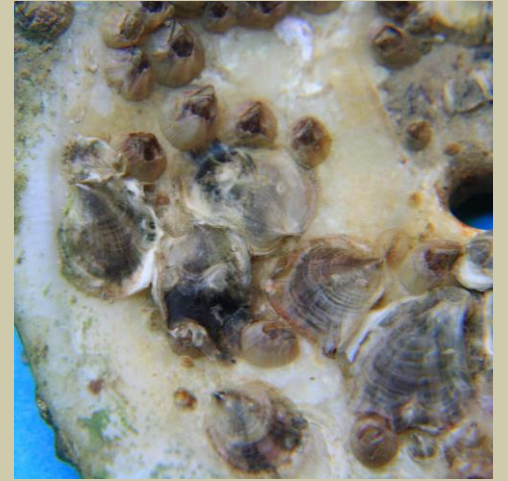
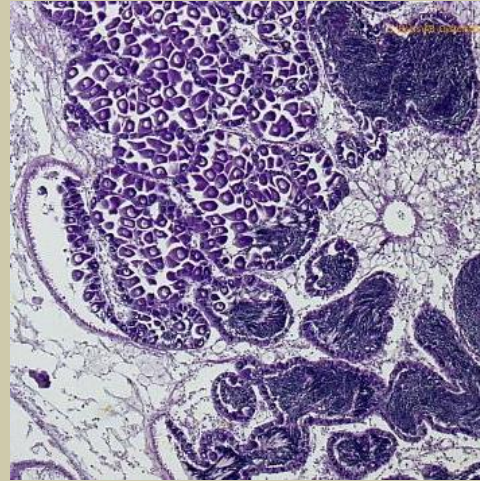


# Project Update: FWC Oyster Monitoring in Suwannee Sound



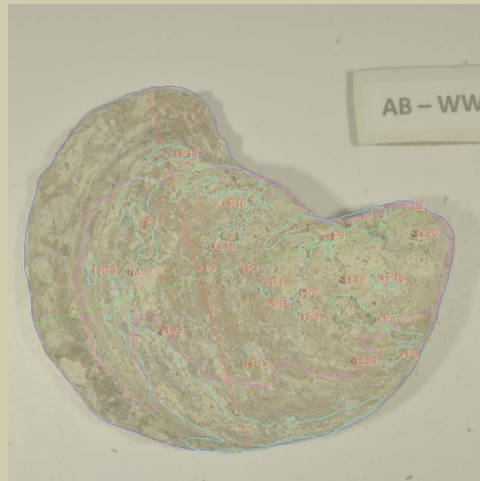
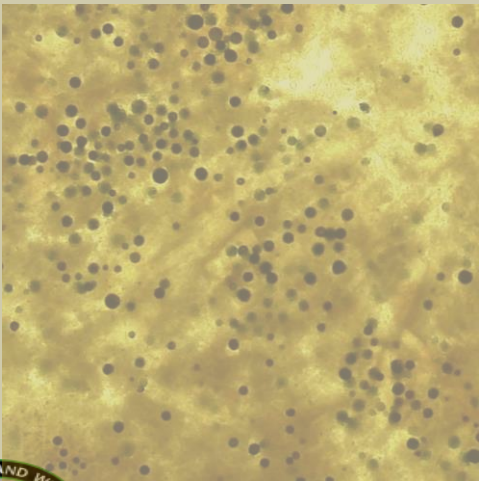
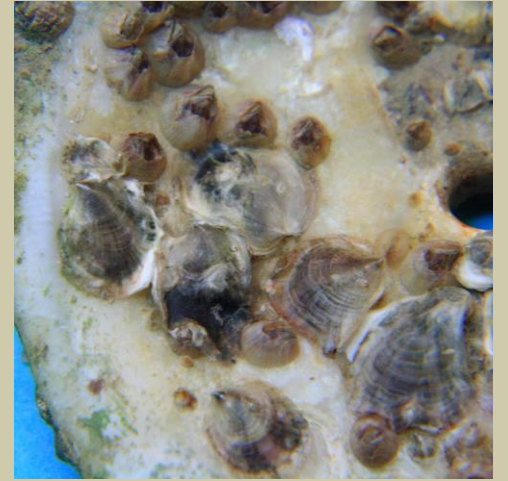
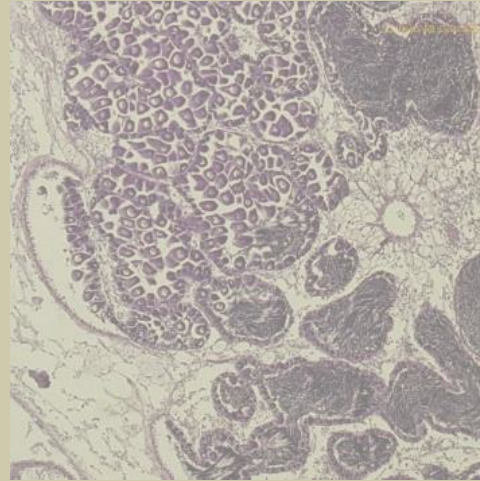
Tomena Scholze  
FWC Fish and Wildlife Research Institute  
Shellfish Research Group  
Oyster Monitoring Program

# Oyster Monitoring



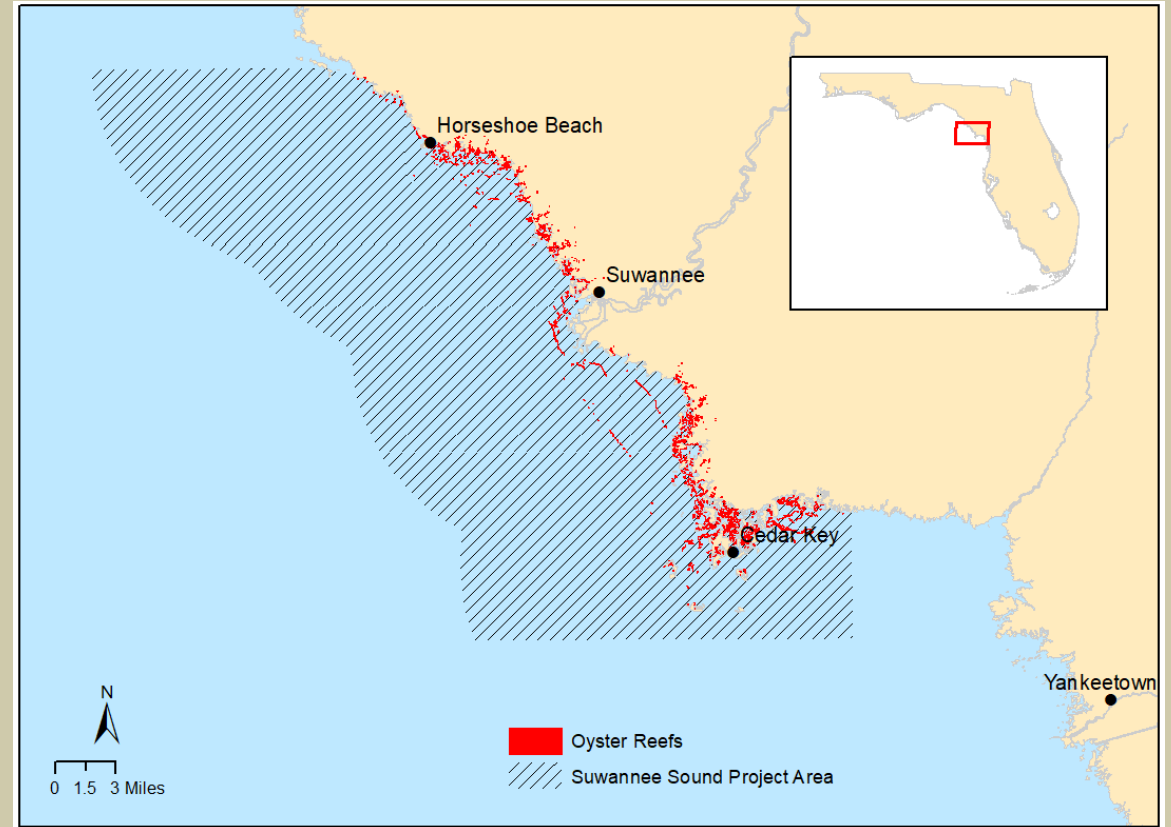


# Oyster Monitoring



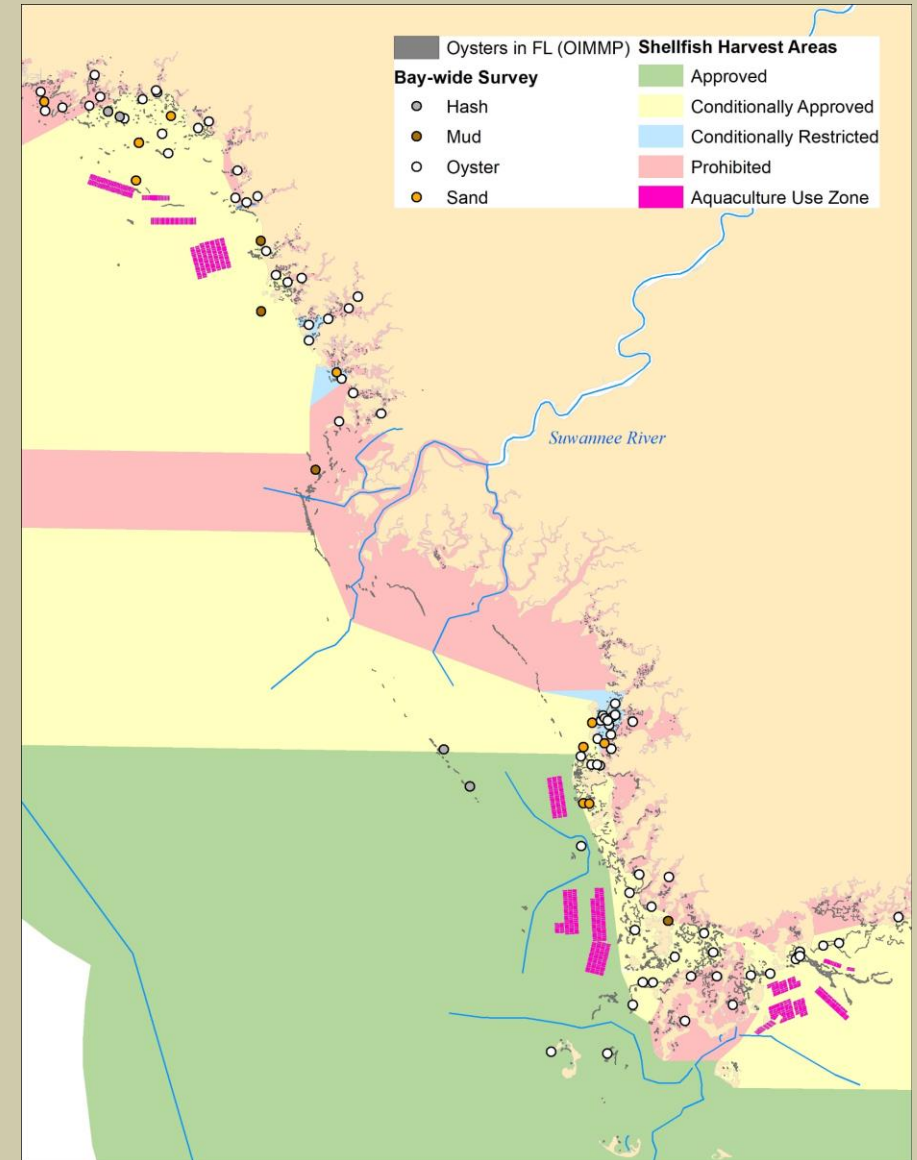
# NFWF Project – Suwannee Sound

- Monitoring & mapping
  - Oyster density
  - Recruitment
  - Substrate availability
- State of the resource
  - Shell Budget Model



# NFWF Project – Suwannee Sound

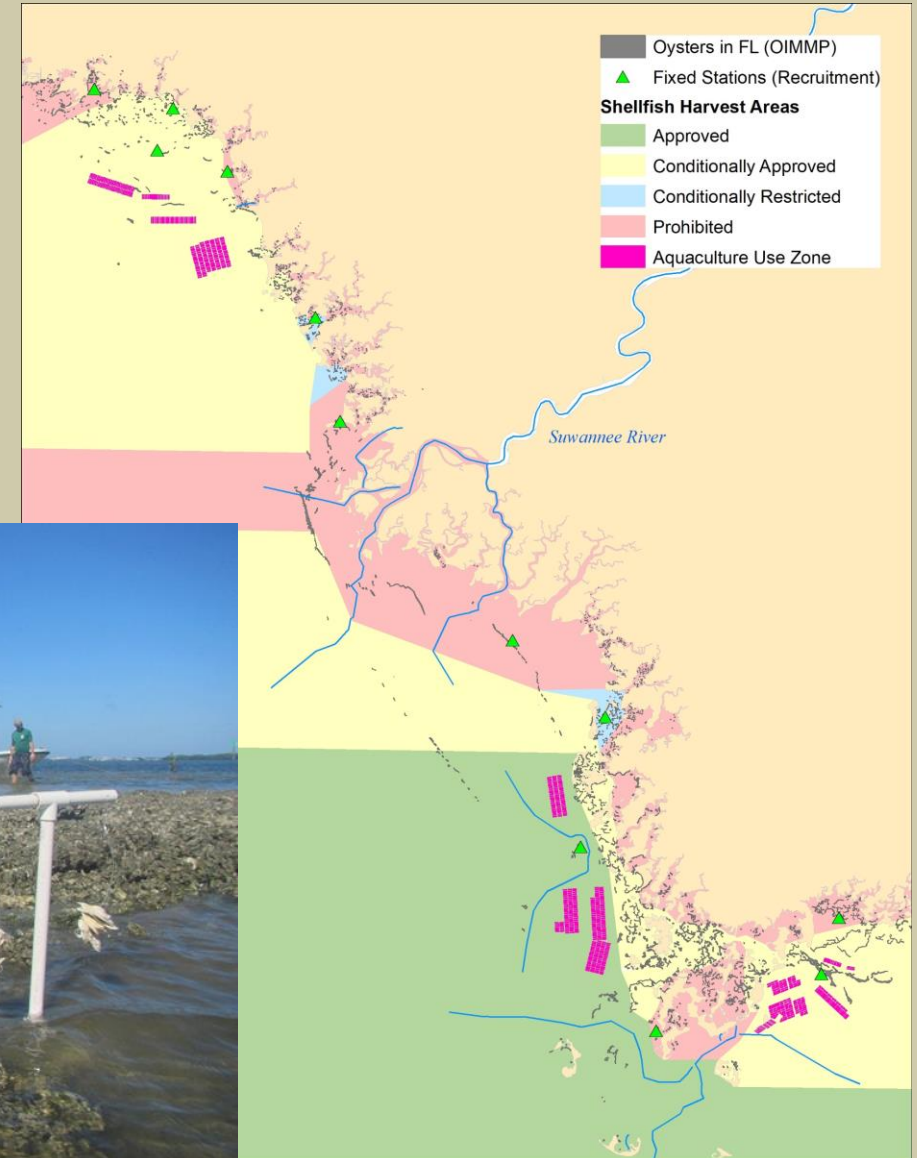
- Bay-wide survey
- Recruitment monitoring
- Shell Budget Model sampling
- Subtidal oyster mapping





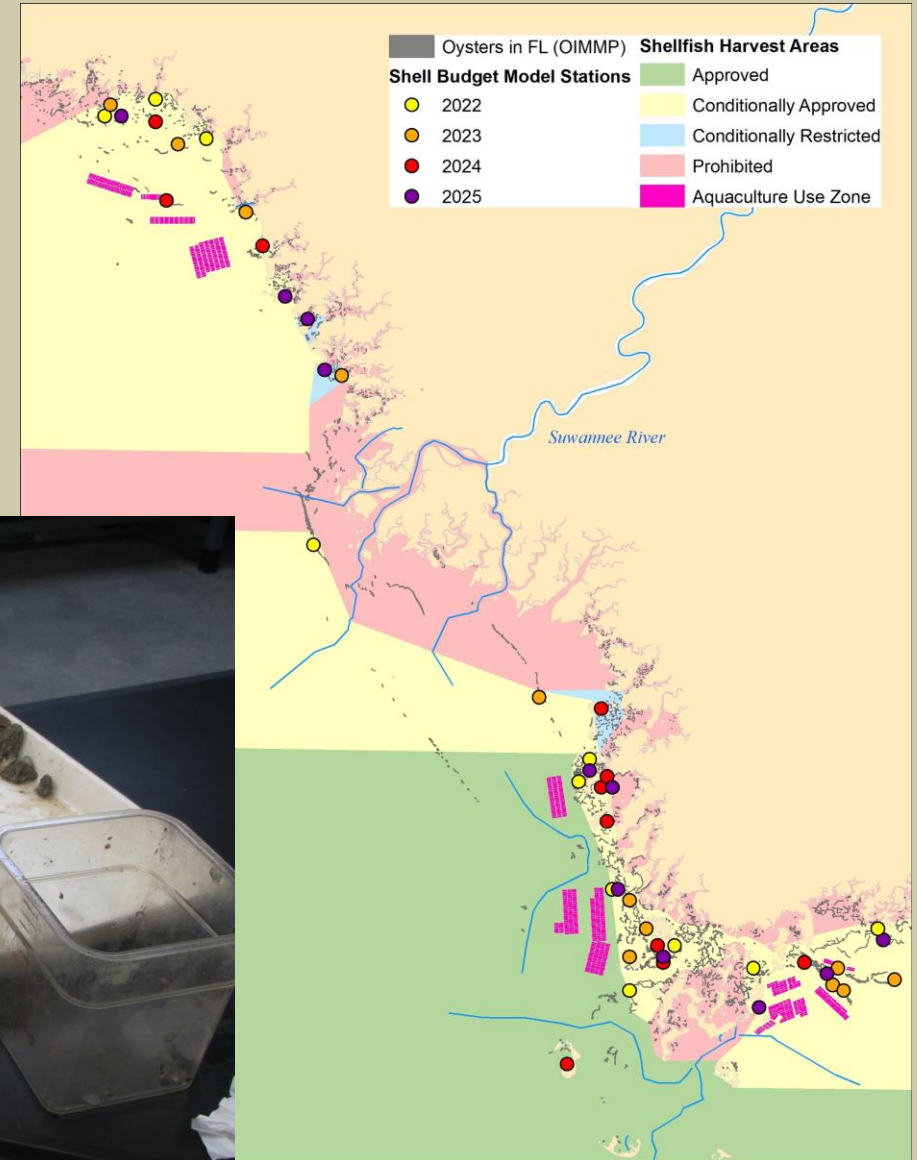
# NFWF Project – Suwannee Sound

- Bay-wide survey
- **Recruitment monitoring**
- Shell Budget Model sampling
- Subtidal oyster mapping



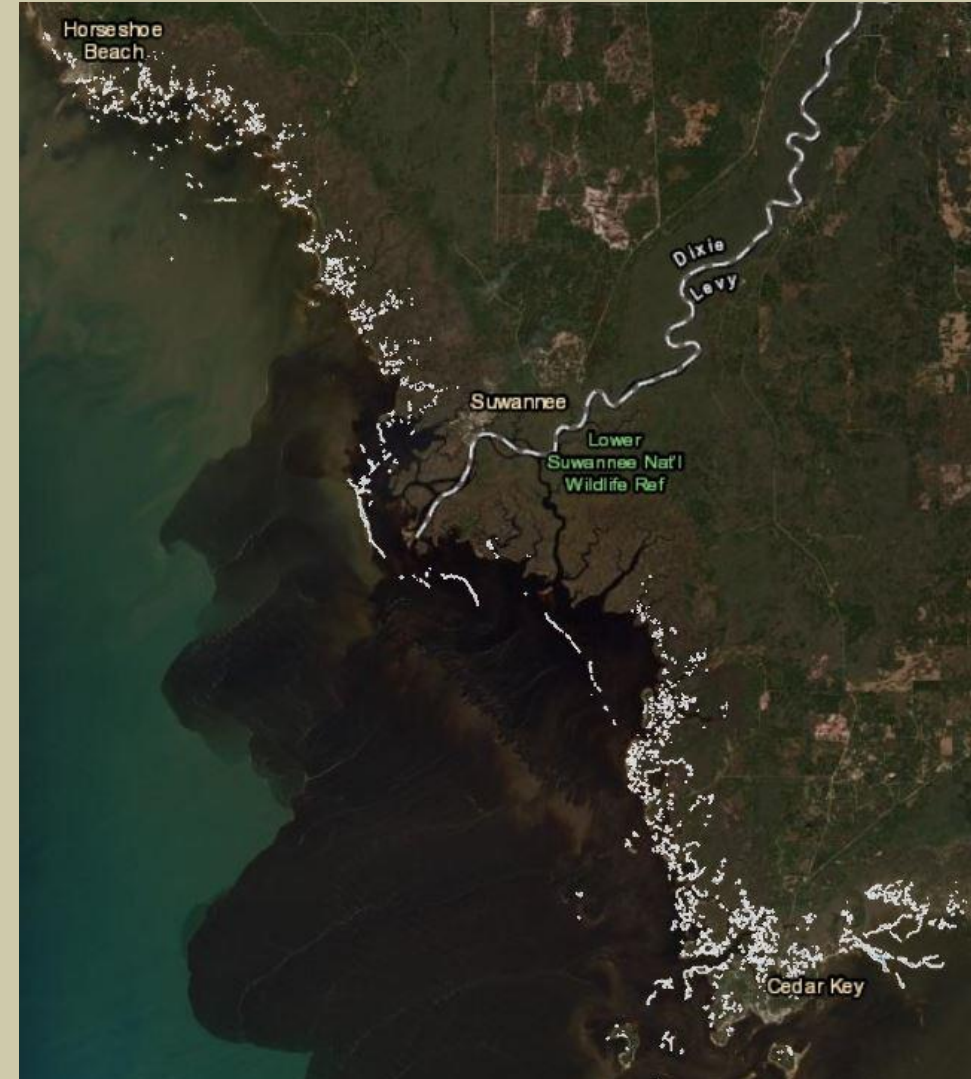
# NFWF Project – Suwannee Sound

- Bay-wide survey
- Recruitment monitoring
- **Shell Budget Model sampling**
- Subtidal oyster mapping



# NFWF Project – Suwannee Sound

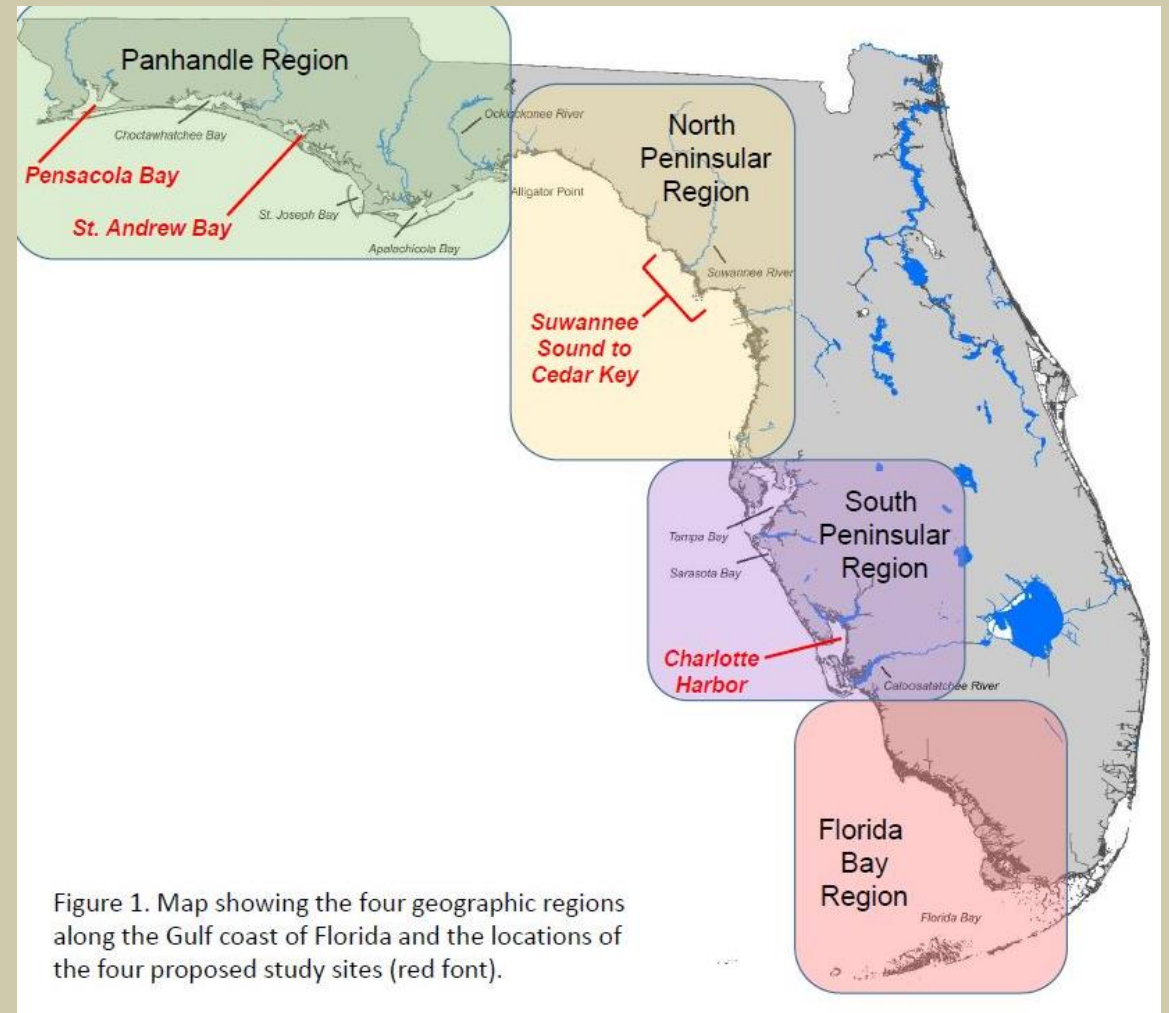
- Bay-wide survey
- Recruitment monitoring
- Shell Budget Model sampling
- **Subtidal oyster mapping**





# FL TIG Project

- Monitoring & mapping
  - Oyster density
  - Recruitment
  - Substrate availability
- Publicly available information for oyster restoration
  - Habitat Suitability Index
  - monitoring trends



# Thank You!

## Crystal River Field Lab Crew

- Jonathan “JB” Brown
- Trevor Kirkland
- Tracey Vlasak
- Gabriel “Gabe” Hopkins

## Contacts

- Tomena.Scholze@MyFWC.com
- Ryan.Gandy@MyFWC.com
- Kara.Radabaugh@MyFWC.com

## Relevant Websites

- FWC – FWRI Shellfish Research  
<https://myfwc.com/research/saltwater/>
- OIMMP  
<https://myfwc.com/research/habitat/coastal-wetlands/projects/oimmp/>

## Literature Cited

- FWC FWRI Oyster Monitoring Procedures. Chapter 11 in: Radabaugh KR, Moyer RP, Geiger SP (editors) Oyster Integrated Mapping and Monitoring Program Report for the State of Florida. St. Petersburg, FL. FWRI Technical Report 22, Version 2.

